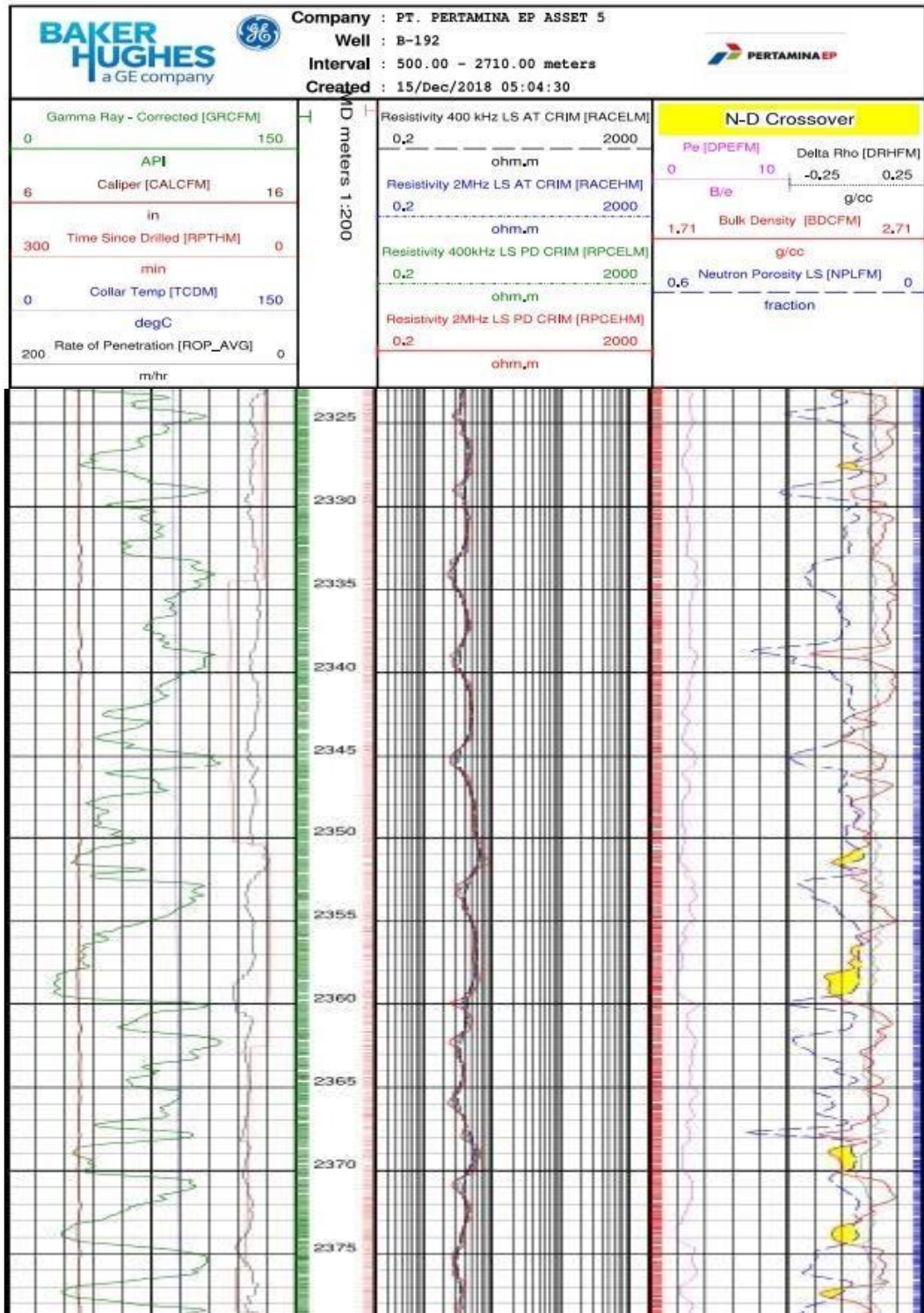
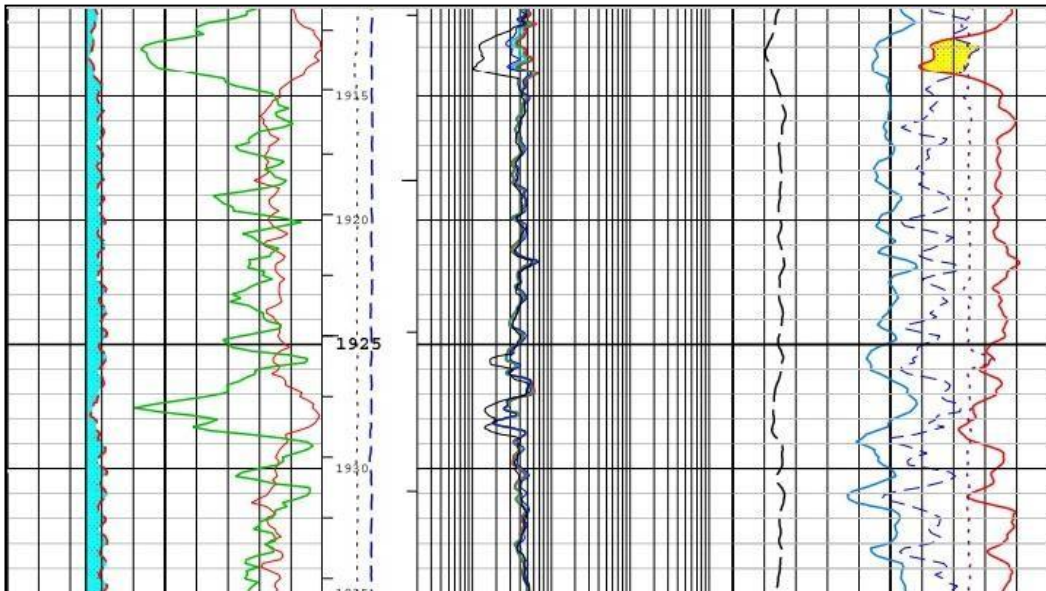
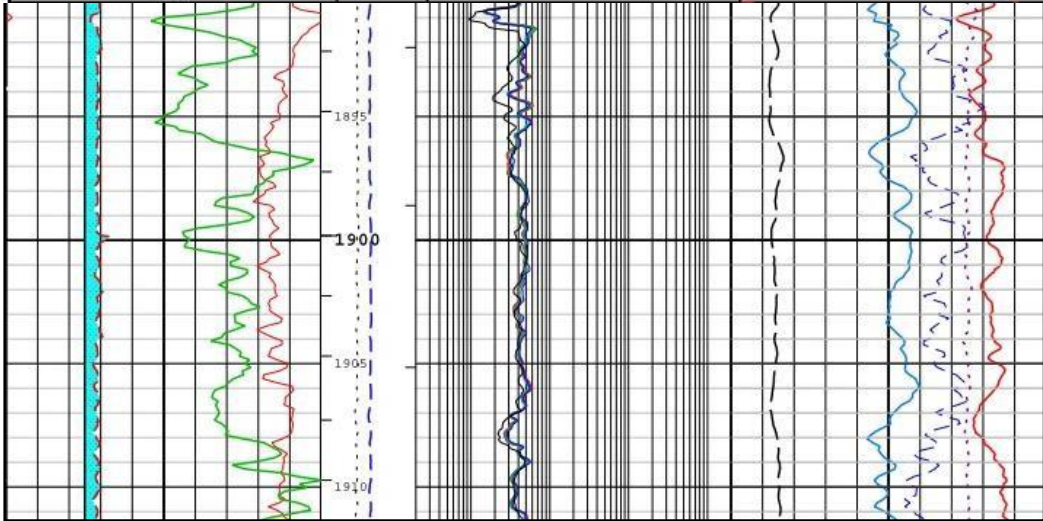


LAMPIRAN





Gamma Ray - Corrected [GRCFM]	0	150	MD meters 1:200	Resistivity 400 kHz LS AT CRIM [RACELM]	0,2	2000	N-D Crossover Pe [DPEFM] Delta Rho [DRHFM] 0 10 -0,25 0,25 B/e g/cc 1,71 Bulk Density [BDCFM] 2,71 g/cc 0,6 Neutron Porosity LS [NPLFM] 0 fraction
API	6	16		Resistivity 2MHz LS AT CRIM [RACEHM]	0,2	2000	
Caliper [CALCFM]	in			Resistivity 400kHz LS PD CRIM [RPCELM]	0,2	2000	
Time Since Drilled [RPTHM]	300	0		Resistivity 2MHz LS PD CRIM [RPCEHM]	0,2	2000	
min							
Collar Temp [TCDM]	0	150					
degC							
Rate of Penetration [ROP_AVG]	200	0					
m/hr							





Gamma Ray - Corrected [GRCFM]	0	150	MD meters 1:200	Resistivity 400 kHz LS AT CRIM [RACELM]	0,2	2000	N-D Crossover		
API	6	16		ohm,m	Resistivity 2MHz LS AT CRIM [RACEHM]	0,2	2000	Pe [DPEFM]	Delta Rho [DRHFM]
Caliper [CALCFM]	in			ohm,m	Resistivity 400kHz LS PD CRIM [RPCELM]	0,2	2000	0	10
Time Since Drilled [RPTHM]	300	0		ohm,m	Resistivity 2MHz LS PD CRIM [RPCEHM]	0,2	2000	B/e	-0,25
Collar Temp [TCDM]	0	150		ohm,m				1,71	Bulk Density [BDCFM]
Rate of Penetration [ROP_AVG]	200	0		ohm,m				0,6	2,71
									g/cc
									Neutron Porosity LS [NPLFM]
									0
									fraction

