

# SIM-USE OF CLAYSTONE, ZEOLITE, AND ACTIVATED CARBON AS A COMPOSITE TO REMOVE HEAVY METALS FROM ACID MINE DRAINAGE IN COAL MINING

*by Mycelia Paradise*

---

**Submission date:** 13-Dec-2022 12:27AM (UTC-0500)

**Submission ID:** 1979926414

**File name:** AEJ.pdf (966.14K)

**Word count:** 3731

**Character count:** 19294

6

## USE OF CLAYSTONE, ZEOLITE, AND ACTIVATED CARBON AS A COMPOSITE TO REMOVE HEAVY METALS FROM ACID MINE DRAINAGE IN COAL MINING

Mycelia Paradise<sup>a</sup>, Edy Nursanto<sup>b</sup>, Nurkhamim<sup>b</sup>, Shofa Rijalul Haq<sup>b</sup>

<sup>a</sup>Mining Engineering Department, Faculty of Mineral Technology, Institut Teknologi Nasional Yogyakarta, Yogyakarta, Indonesia

<sup>b</sup>Mining Engineering Department, Faculty of Mineral Technology, Universitas Pembangunan Nasional Veteran Yogyakarta, Yogyakarta, Indonesia

### Article history

Received

03 May 2021

Received in revised form

05 July 2021

Accepted

01 January 2022

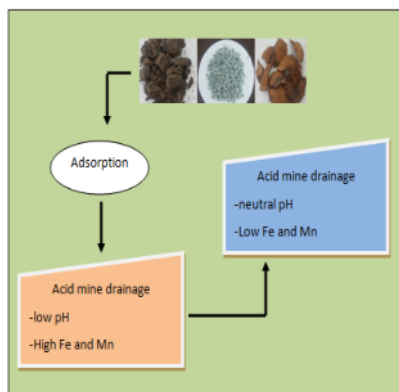
Published online

31 May 2022

\*Corresponding author

mycelia@itny.ac.id

### Graphical abstract



### Abstract

Acid mine drainage is an environmental issue impairing water sources globally. Efficient and continuous treatment in mining regions is urgently required. Therefore, this research aimed to evaluate the use of claystone from coal overburden, zeolite, and activated carbon from coconut shell as a composite to remove Fe and Mn from acid mine drainage. XRD, BET, and SEM characterized the adsorbent. The X-Ray Diffraction analysis showed the types of mineral in claystone were kaolinite, zeolite: mordenite, and activated carbon: cristobalite. Composite made with three ratios (Claystone:Zeolite:Activated carbon) = 50:25:25; 25:25:50; and 25:50:25. According to the surface area analyzer, composite with a 25:25:50 ratio had the largest surface area (62,44 m<sup>2</sup>/g). SEM-EDX analysis showed that composite had porous morphology and active sites such as Al and Si. Adsorption was carried out using a hot plate stirrer with various contact time: 30, 60, 90, 120 and 150 minutes. The results showed that composite succeeded in increasing pH from 2.6 to 7.0 and reducing Fe concentration from 13.006 to 0.1484 ppm (98,86%) and Mn concentration from 21.9 to 20.283 ppm (33,69%). The adsorption capacities of the composite were 1,286 mg/g for Fe and 1,031 mg/g for Mn. It can be concluded that composite is a good adsorbent for removing iron from acid mine drainage.

**Keywords:** Acid mine drainage, Adsorption, Capacity, Composite, Effectiveness

18

© 2022 Penerbit UTM Press. All rights reserved

### 1.0 INTRODUCTION

Coal mining industries play an important role in the country's economy. Indonesia is the third-largest coal producer globally with 323.3 million tonnes in 2018 [12]. However, the process of overburden removal causes the exposure of sulfide minerals associated with acid mine drainage (AMD), where heavy acidic wastewater with high concentrations of dissolved ferrous and non-ferrous metal sulphates and salts [14]. AMD can contaminate land and surface watercourses, harming plants, humans, wildlife, and aquatic animals.

AMD's most common heavy metals are iron (Fe) and manganese (Mn) in coal mining. There are many heavy metal treatments in wastewater, but adsorption has been described as

an efficient technique because of its effectiveness in extracting contaminants from dilute solutions [11]. The selection of this adsorbent is based on its abundant availability. Claystone (clay) is composed of hydrous aluminum silicate (Al<sub>2</sub>O<sub>3</sub>.2SiO<sub>2</sub>.2H<sub>2</sub>O) and has strong sorption of heavy metals dissolved in water [8]. Zeolite consists of [SiO<sub>4</sub>]<sup>4-</sup> and [AlO<sub>4</sub>]<sup>5-</sup> bonds connected by oxygen atoms to form a zeolite framework. Zeolites contain space occupied by free water molecules, making it possible to use them as adsorbents in wastewater [2]. The advantage of activated carbon from coconut shell compared to other materials (such as rice husks, wood, bamboo, bagasse, and peanut shells) is that coconut shell has more micropores and lower ash content [5]. Overall, the adsorbents had not been optimally utilized, and the combination effectiveness remains

2



### 3.0 RESULTS AND DISCUSSION

#### XRD Characterization

##### Claystone

The XRD analysis of claystone before activation (Figure 4) indicated that claystone from coal overburden contains kaolinite, illite, and montmorillonite. This indication was suggested by the diffraction peaks at  $2\theta$ . Illit ( $\text{Al}_2\text{H}_2\text{KO}_{12}\text{Si}_4$ ) appeared at  $2\theta = 12^\circ; 20.2^\circ; 22^\circ; 23.5^\circ; 47.5^\circ; 55^\circ; 57.5^\circ; 60.5^\circ; 63^\circ$ . Montmorillonit ( $\text{Al}_2\text{CaO}_5\text{O}_{12}\text{Si}_4$ ) appeared at  $2\theta = 4.5^\circ; 12^\circ; 20.8^\circ; 30.9^\circ; 36.5^\circ; 46^\circ; 47.2^\circ; 48.5^\circ; 50.8^\circ$ . Kaolinit ( $\text{Al}_2\text{O}_9\text{Si}_2$ ) appeared at  $2\theta = 23.5^\circ; 27^\circ; 35.8^\circ; 37.5^\circ; 38.2^\circ; 55^\circ; 57.5^\circ; 60.2^\circ; 62.5^\circ; 75^\circ; 76.5^\circ$ .

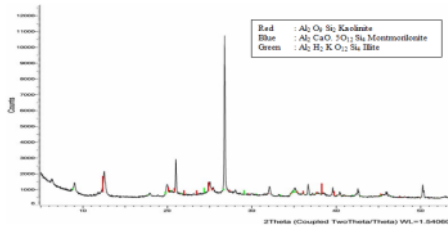


Figure 4. XRD diffractogram of claystone before activation

The diffractogram of activated claystone (Figure 5) suggested the increased intensity. The stronger diffraction intensity, the more areas of mineral crystals contained in claystone. It also showed the appearance of new peaks at  $2\theta = 21^\circ; 26.5^\circ; 34.5^\circ; 39.5^\circ; 40.3^\circ; 42^\circ; 46^\circ; 50^\circ; 55.5^\circ; 56.2^\circ; 60^\circ; 64^\circ; 66^\circ; 68.8^\circ; 69.3^\circ; 73.6^\circ; 75.8^\circ; 77.8^\circ; 80^\circ$  (quartz).

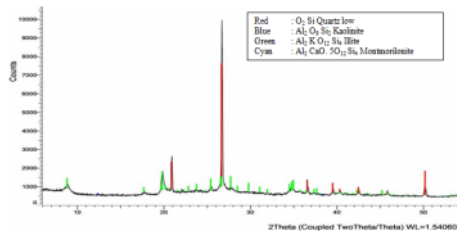


Figure 5. XRD diffractogram of claystone after activation

##### Zeolite

The XRD analysis (Figure 6) showed that diffractogram natural zeolite appeared at  $2\theta = 9.516; 4.516; 4.076; 3.404; 3.269; 2.935$  and  $2.549$  with quite high intensity (mordenite). In addition, peaks with high intensity appears at  $2\theta = 6.808; 5.976; 4.625; 4.353; 3.921; 3.834; 3.535$  and  $3.439$  (clinoptilolite).

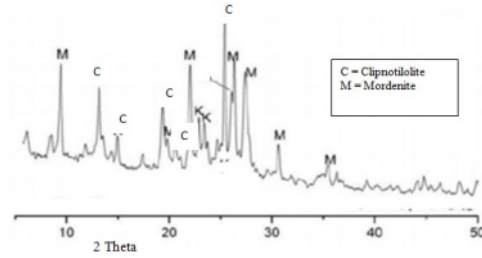


Figure 6. XRD diffractogram of zeolite before activation

A diffractogram of activated zeolite (Figure 7) showed no significant change on the diffractogram but increased intensity after activating. It indicated that the activation process could remove impurities on zeolite so increasing the crystallinity.

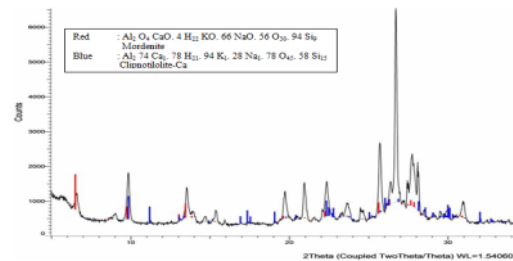


Figure 7. XRD diffractogram of zeolite after activation

##### Activated Carbon

XRD diffractogram of coconut shell carbon at the wavelength of 1.54060 angstroms (Figure 8) showed that the peaks tend to widen and irregular, indicated that coconut shell carbon from Bontang has an amorphous crystal structure.

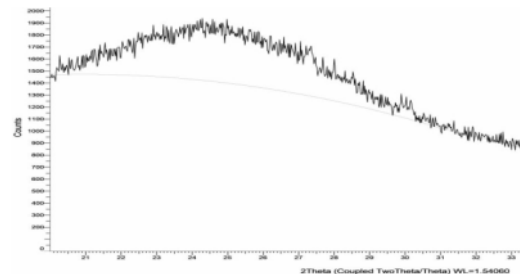


Figure 8. XRD diffractogram of coconut shell carbon

XRD diffractogram of activated carbon from coconut shell (Figure 9) shows that there were new peaks : manganoeudialyte ( $\text{C}_2\text{64H}_4\text{56Al}_0\text{75Ca}_{18}\text{Ce}_0\text{18F}_0\text{39Fe}_3\text{6K}_1\text{17Mn}_5\text{72Na}_{47}\text{84Nb}_0\text{87O}_{254}\text{37Si}_{75}\text{57Sr}_2\text{43Ti}_0\text{57Zr}_3$ ) identified by the appearance of

$2\theta = 12^\circ; 22^\circ; 22.5^\circ; 23.4^\circ; 26.2^\circ; 29.5^\circ; 30^\circ; 30.4^\circ; 30.6^\circ; 31.3^\circ; 34.6^\circ; 35.4^\circ; 35.6^\circ; 37.6^\circ; 37.8^\circ; 38.7^\circ; 39.7^\circ$ . Fayalite ( $Fe_2O_4Si$ ) identified by the appearance of  $2\theta = 25^\circ; 29.1^\circ; 29.3^\circ; 31.6^\circ; 34^\circ; 35^\circ; 37.3^\circ$ . Cristobalite ( $O_2Si$ ) identified by the appearance of  $2\theta = 22.2^\circ; 28.4^\circ; 31.4^\circ; 36.1^\circ$ .

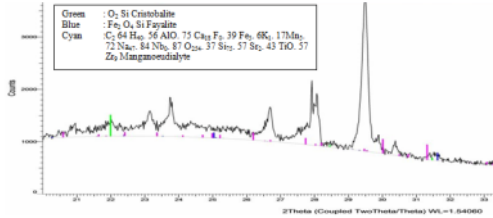


Figure 9. XRD diffractogram of activated carbon

SAA Characterization

Surface area analysis was carried out using Brunner Emmet Teller (BET) method to determine the surface area of each composite. The results are shown in Table 1. There are three composites with different claystone ratios, zeolite and activated carbon from coconut shell (C:Z:A). The proportions of composite A, B, and C were 50: 25: 25, 25: 25: 50, and 25: 50: 25 respectively.

Table 1 showed that composite B is the best composite because of its largest surface area (62.4423 m<sup>2</sup>/g). In addition, composite B had the smallest pore size (3.75808 nm) and the largest pore volume (0.022073 cm<sup>3</sup>/g). Therefore, composite B was chosen as an adsorbent in the adsorption of iron (Fe) and manganese (Mn) in AMD.

Table 1. Composites Surface Area

Composite	Pore Size (nm)	Pore Volume (cm <sup>3</sup> /g)	Total Surface Area (m <sup>2</sup> /g)
A	6.1804	0.011915	37.9774
B	3.7581	0.022073	62.4423
C	6.5718	0.008740	32.3444

SEM Characterization

SEM-EDX Spectrum tested composite B to analyze composite surface morphology before and after adsorption. Figure 10 showed that composite had a porous morphology, indicated that the physical and chemical activation processes succeeded in cleaning the impurities on the surface of materials. In addition, pores in adsorbent play an important role in absorbing heavy metals.

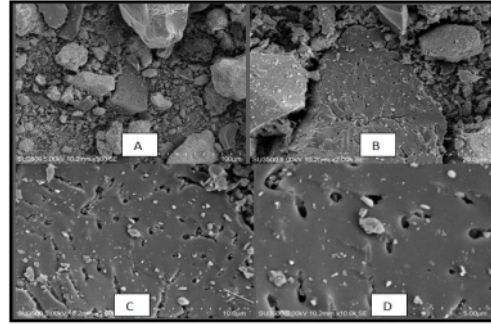


Figure 10. Composite surface morphology before adsorption. a.500x magnification b.2000x magnification c.5000x magnification d.10000x magnification

Figure 11 showed that some of the pores are closed and the appearance of the pore was lower than composite surface morphology before adsorption. It indicated that pores in the composite had been filled with heavy metals absorbed during the adsorption process.

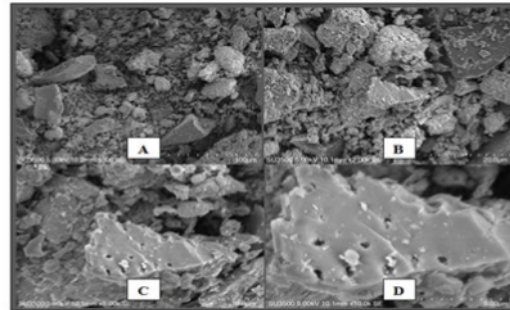


Figure 11. Composite surface morphology after adsorption. a.500x magnification b.2000x magnification c.5000x magnification d.10000x magnification

This study used EDS (Energy Dispersive Spectroscopy) or EDX (Energy Dispersive X-Ray) to get quantitative results from the SEM test. EDS is produced from X-ray characteristic by firing an X-ray on desired position so that specific peaks represent its elements in it. The principle of EDX is reading electron affinities. Based on the EDX graph (net intensity vs electrons energy in each shell), the main component of the composite is a carbon (C) with 51.9% percentage weight before adsorption and 79% after adsorption (Table 2). Furthermore, after adsorption, iron in composite increased from 0.4 to 2.4%, indicated that composite succeeded in absorbing iron from AMD.

Table 2. Percentage Weight of Elements in Composite

Element	Percentage weight before adsorption (%wt)	Percentage weight after adsorption (%wt)
C	51,9	79
22 Na	34,6	0
Na	0,8	0,3
Mg	0,2	0,1
Al	2,7	4,3
Si	6,9	11,2

K	0,7	1
Ca	1,7	1,8
Fe	0,4	2,4

### Iron and Manganese Adsorption

#### pH Increasing After Adsorption

Figure 12 showed that 2.5 grams of composite succeeded increasing AMD pH from the initial pH of 2.6 to 7.2. The effectiveness of pH increasing at 30 minutes of contact time is 62.86%, 60 minutes is 63.38%, 90 minutes is 64.38%, 120 and 150 minutes is 63.89%. The average effectiveness is 63.68%. The pH increasing indicated that the composite has succeeded in absorbing iron so that the concentration of iron in AMD is lower than the initial concentration. In addition, the presence of Na, Mg, K and Ca cations in the composite had the ability on increasing pH.

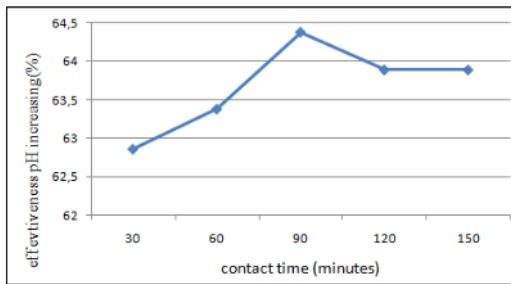


Figure 12. Effectiveness of pH increasing after adsorption

#### Effectiveness of Decreasing the Iron and Manganese Concentration

Based on Figure 13, the effectiveness of decreasing the iron concentration at 30 minutes of contact time is 98.86% (from an initial concentration of 13.006 to 0.1484 ppm), 60 minutes is 98.46% (from an initial concentration of 13.006 to 0.1998 ppm), 90 minutes is 97.61% (from an initial concentration of 13.006 to 0.3114 ppm), 120 minutes is 99.24 % (from an initial concentration of 13.006 to 0.0988 ppm), and 150 minutes is 99.61% (from an initial concentration of 13.006 to 0.0510 ppm). Therefore, the average effectiveness of decreasing the iron concentration is 98.76%. The optimum contact time for adsorbing iron concentration is 30 minutes. It means composite succeeded adsorbing iron concentration and it meets the environmental quality of local standard.

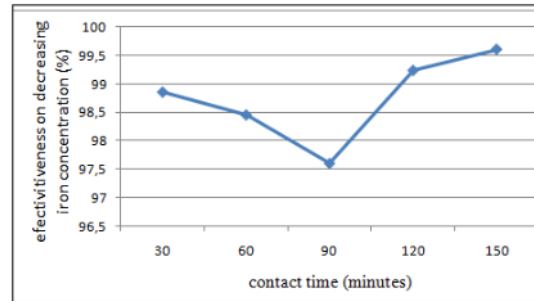


Figure 13. Effectiveness of decreasing the iron concentration

The adsorption effectiveness of composite at 30 minutes of contact time is 33.69% (from an initial concentration 30.590 ppm to 20.283 ppm), 60 minutes is 41.38% (from an initial concentration 30.590 ppm to 17.931 ppm), 90 minutes is 39.13% (from an initial concentration 30.590 ppm to 18.620 ppm), 120 minutes is 32.84% (from an initial concentration 30.590 ppm to 20.544 ppm), and 150 minutes is 38.19. % (from an initial concentration 30.590 ppm to 18.905 ppm). The average effectiveness of decreasing Mn concentration is 37.046%. Thus, composite succeeded in reducing manganese concentration despite not meeting the environmental quality of local standard (Figure 14).

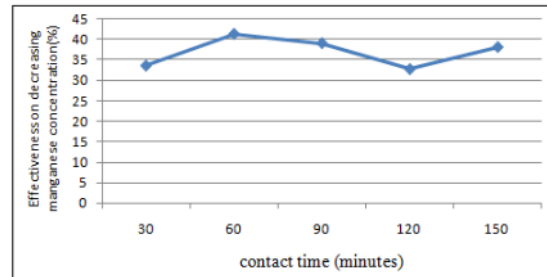


Figure 14. Effectiveness of decreasing the manganese concentration

Based on the experimental results, decreasing manganese concentration is not as high as decreasing iron concentration, where the effectiveness of Mn is around 44%, while Fe reaches 99%. According to research conducted by Kerndoff and Schnitzer (1980) [4] shows that at pH 2.4 the order of adsorption is as follows: Hg > Fe > Pb > Cu = Al > Ni > Cr = Zn = Cd = Co = Mn. In addition, the periodic table of the elements shows that the electronegativity of iron is greater than the manganese element which supports the experimental results of this study show that the absorption percentage of Fe is greater than Mn. The order of ion absorption in water due to ion selectivity to the adsorbent media is Fe<sup>3+</sup> > Al<sup>3+</sup> > Pb<sup>2+</sup> > Ba<sup>2+</sup> > Sr<sup>2+</sup> > Zn<sup>2+</sup> > Cu<sup>2+</sup> > Fe<sup>2+</sup> > Mn<sup>2+</sup> > Ca<sup>2+</sup> > Mg<sup>2+</sup> > K<sup>+</sup> > NH<sub>4</sub><sup>+</sup> > H<sup>+</sup> > Li<sup>+</sup>. Therefore, according to the ion selectivity, this study shows Fe is more strongly adsorbed than Mn. This is also in line with the research conducted by Stumm and Morgan (1981) in Pan and Tseng (2003) [10] which shows that the absorption of dissolved Mn from a solution can be achieved at high pH conditions, and Mn absorption will run slowly at pH less than 8.

### Adsorption Capacity

Adsorption capacity is the amount of heavy metal absorbed by each gram of adsorbent. For example, based on the adsorption results with 250 ml AMD, 2.5 grams composite, and contact times of 30, 60, 90, 120, and 150 minutes, the adsorption capacity of the composite can be seen in Figures 12 and 13.

Adsorption with 30 minutes contact time, the adsorption capacity is 1.286 mg/g. It means that each 1 gram of composite can absorb as much as 1.286 mg of Fe metal. The changing of adsorption capacity is not too significant with the addition of contact time up to 150 minutes (the adsorption capacity was still at around 1.2 mg/g) (Figure 15). This is in line with the results of the AAS test for Fe after 30 minutes of adsorption. Composite had saturated so the absorption was no longer effective.

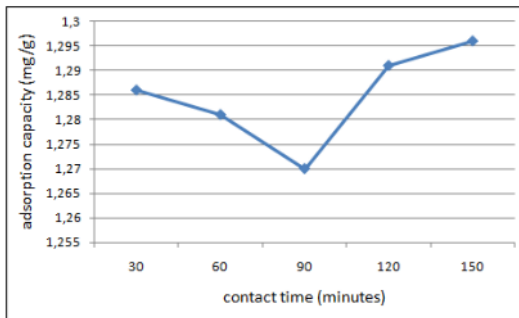


Figure 15. The composite adsorption capacity of iron metal

In a composite mass of 2.5 grams with a contact time of 30 minutes, the adsorption capacity is 1.031 mg/g. The adsorption capacity increased to 1.266 mg/g at 60 minutes of contact time, then decreased to the range of 1.1 mg/g on 90 to 150 minutes (Figure 16). This is in line with the results of the AAS test for Mn metal, that the optimum contact time is 60 minutes.

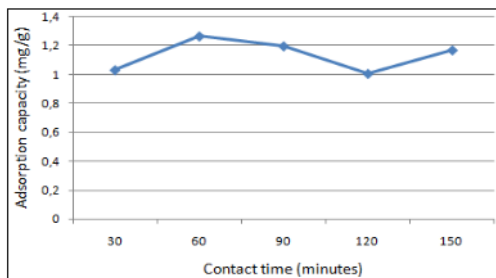


Figure 16. The composite adsorption capacity of manganese metal

## 4.0 CONCLUSION

Claystone from coal overburden, zeolite, and activated carbon from coconut shell is recognized to be a low-cost adsorbent to remove iron and manganese metals from coal acid mine drainage. The best composite produced from 25% claystone, 25% zeolite, and 50% activated carbon from coconut shell. Composite succeeded in decreasing iron metal concentration

from acid mine drainage to meet the environmental quality standard. The optimum contact time for adsorbing iron concentration is 30 minutes, with effectiveness decreasing 98.86% (from an initial concentration of 13.006 ppm to 0.1484 ppm). The optimum contact time for adsorbing metal concentration is 60 minutes, with effectiveness decreasing 41.38% (from an initial concentration 30.590 ppm to 17.931 ppm). Composite succeeded in decreasing manganese concentration although not yet meeting the environmental quality standard. The effectiveness of decreasing manganese concentration is not as high as the effectiveness of decreasing iron concentration, where the effectiveness of Mn is around 44%, while Fe reaches 99%. The adsorption capacity of iron is 1.286 mg/g, and manganese is 1.266 mg/g.

## Acknowledgement

The authors are grateful to Mr.Era and Mr.Raymond for facilitating the sample of acid mine drainage from Bontang East Kalimantan

## References

- Balintova, M., Holub, M., Stevulova, N., Cigasova, J., & Tesarcikova, M., 2014. "Sorption in acidic environment-biosorbents in comparison with commercial adsorbents", *Chemical Engineering Transactions* 39:625-630. DOI:10.3303/CET1439105
- Catri. C. R., 2016." The Effectiveness of Natural Zeolite as Metal Absorbent Copper (II) in Pool Water With Column Adsorption Method", *Jurnal Penelitian Saintek*, 21(2): 87-95,
- Diola. M. B. L., & Orozco. C. 2015. "Improved Removal of Copper Ions from Aqueous Solution Using NaOH-Pretreated Coco Peat", *ASEAN Engineering Journal*, 4(1): 93-103,
- Kerndorff. H., and Schnitzer. M., 1980. "Sorption of Metals on Humic Acid", *Geochim Cosmochim Acta*, 44: 1577-1581,
- Li. W., Peng. J., Zhang. L., Yang. K., Xia. H., Zhang. S., & Guo. S. H. 2009., "Preparation of activated carbon from coconut shell chars in pilot-scale microwave heating equipment at 60 kW", *Waste management*, 29(2): 756-760,
- Long. N. Q., Vuong. H. T., Ha. H. K. P., Kuniawan. W., Hinode. H., & Baba. T., 2016. "Preparation, characterization and H2S adsorptive removal of ion-exchanged zeolite X", *ASEAN Engineering Journal*, 5(1): 4-14,
- Mukarram. F., Karsidi. R., Gravitiari. E., Astuti. F., & Maharditya. W. 2020., "The assessment of claystone, quartz and coconut shell charcoal for adsorbing heavy metals ions in acid mine drainage", *Materials Science and Engineering*, 858(1): 012040,
- Musso. T. B., Parolo. M. E., 2014. Pettinari. G., & Francisca. F. M., "Cu (II) and Zn (II) adsorption capacity of three different clay liner materials", *Journal of environmental management*, 146: 50-58,
- Nwosu. F. O., Ajala. O. J., Owoyemi. R. M., & Raheem. B. G. 2018., "Preparation and characterization of adsorbents derived from bentonite and kaolin clays", *Applied Water Science*, 8(7): 195,
- Pan, S. C., Lin, C. C., & Tseng, D. H. 2003., "Reusing sewage sludge ash as adsorbent for copper removal from wastewater". *Resources, Conservation and Recycling*, 39(1): 79-90
- Patterer. S., Bavasso. I., Sambeth. J., Medici. F. 2019., "Cadmium removal from aqueous solution by adsorption on spent coffee grounds", *Chemical Engineering Transactions*, 60, 157-162, 2017.
- Petroleum, B., "BP statistical review of world energy report" BP: London, UK,
- Pranoto, Martini. T., Astuti. F., & Maharditya. W. 2020., "Test The Effectiveness and Characterization of Quartz Sand/Coconut Shell Charcoal Composite as Adsorbent of Manganese Heavy Metal", *Materials Science and Engineering*, 858(10): 012041,

- [14] Roca. Y. B., & Fuentes. W. S. 2019. "Use of Nanoclay as an Adsorbent to Remove Cu (ii) from Acid Mine Drainage (AMD)", *Chemical Engineering Transactions*, 73: 241-246,
- [15] Tan. I. A. W., Abdullah. M. O., Lim. L. L. P., & Yeo. T. H. C. 2017., "Surface modification and characterization of coconut shell-based activated carbon subjected to acidic and alkaline treatments", *Journal of Applied Science & Process Engineering*, 4(2): 186-194



# SIM-USE OF CLAYSTONE, ZEOLITE, AND ACTIVATED CARBON AS A COMPOSITE TO REMOVE HEAVY METALS FROM ACID MINE DRAINAGE IN COAL MINING

## ORIGINALITY REPORT

13%

SIMILARITY INDEX

8%

INTERNET SOURCES

8%

PUBLICATIONS

4%

STUDENT PAPERS

## PRIMARY SOURCES

- 1 P.B. Nagarnaik. "Arsenic(III) removal by adsorption on sawdust carbon", International Journal of Environment and Pollution, 2003  
Publication 1%
- 2 Submitted to School of Business and Management ITB  
Student Paper 1%
- 3 [journal.moripublishing.com](http://journal.moripublishing.com)  
Internet Source 1%
- 4 Pranoto, Tri Martini, Fitri Astuti, Winda Maharditya. "Test The Effectiveness and Characterization of Quartz Sand/Coconut Shell Charcoal Composite as Adsorbent of Manganese Heavy Metal", IOP Conference Series: Materials Science and Engineering, 2020  
Publication 1%
- 5 [utpedia.utp.edu.my](http://utpedia.utp.edu.my)  
Internet Source 1%

6	Submitted to Griffith University Student Paper	1 %
7	M. Schnitzer. "Binding of Humic Substances by Soil Mineral Colloids", Soil Science Society of America, 2015 Publication	1 %
8	doaj.org Internet Source	1 %
9	T Mutiara, L Setyaningsih, A Chafidz, B S Panandita, R Raharjo. "Alkali modified jackfruit wood sawdust as bio adsorbent for removal of Pb(II) ions from wastewaters", IOP Conference Series: Materials Science and Engineering, 2019 Publication	1 %
10	Submitted to North West University Student Paper	1 %
11	Aydeniz Demir Delil, Olcay Gülçiçek, Nazım Gören. "Optimization of Adsorption for the Removal of Cadmium from Aqueous Solution Using Turkish Coffee Grounds", International Journal of Environmental Research, 2019 Publication	<1 %
12	jurnaldampak.ft.unand.ac.id Internet Source	<1 %
13	www.neliti.com Internet Source	

<1 %

14

[www.rasayanjournal.co.in](http://www.rasayanjournal.co.in)

Internet Source

<1 %

15

[www.coursehero.com](http://www.coursehero.com)

Internet Source

<1 %

16

[repository.unej.ac.id](http://repository.unej.ac.id)

Internet Source

<1 %

17

[www.regional.org.au](http://www.regional.org.au)

Internet Source

<1 %

18

[www.researchgate.net](http://www.researchgate.net)

Internet Source

<1 %

19

Elanda Fikri, Reta Mutiara Farid, Yosephina Septiati, Nanny Djuhriah, Neneng Hanurawaty, Amar Khair. "Effect of Zeolite and Activated Carbon Thickness Variation as Adsorbent Media in Reducing Phenol and Manganese Levels in Wastewater of Non-Destructive Testing Unit", Journal of Ecological Engineering, 2022

Publication

<1 %

20

[archive.org](http://archive.org)

Internet Source

<1 %

21

Rohit Gahlot, Kaling Taki, Manish Kumar. "Efficacy of Nanoclays as the Potential Adsorbent for Dyes and Metal Removal from

<1 %

the Wastewater: A Review", Environmental  
Nanotechnology, Monitoring & Management,  
2020

Publication

22

Springer Geochemistry/Mineralogy, 2014.

Publication

<1 %

23

dns2.asia.edu.tw

Internet Source

<1 %

24

ojs.jmolekul.com

Internet Source

<1 %

25

www.science.gov

Internet Source

<1 %

26

Mycelia Paradise, Edy Nursanto, Nurkhamim  
Nurkhamim. "Efektivitas Komposit Material  
Overburden Batubara, Zeolit, dan Arang Aktif  
Tempurung Kelapa Sebagai Adsorben Besi  
dalam Air Asam Tambang", Indonesian  
Journal of Earth Sciences, 2021

Publication

<1 %

Exclude quotes On

Exclude matches Off

Exclude bibliography On