

## Abstract

Acid mine drainage is an environmental issue impairing water sources globally. Efficient ~~adn-and continues-continuous~~ treatment in mining regions is urgently required. Therefore, this research aimed to evaluate the use of claystone from coal overburden, zeolite, and activated carbon from coconut shell as a composite to remove Fe and Mn from acid mine drainage. ~~The adsorbent was characterized by XRD, BET, and SEMXRD. BET and SEM characterized the adsorbent.~~ The X-Ray Diffraction analysis showed the types of mineral in claystone were kaolinite, zeolite: mordenite, and activated carbon: cristobalite. Composite made with ~~3-three~~ ratios (Claystone:Zeolite:Activated carbon) = 50:25:25; 25:25:50; and 25:50:25. According to the surface area analyzer, composite with a 25:25:50 ratio had the largest surface area (62,44 m<sup>2</sup>/g). SEM-EDX analysis showed that composite had porous morphology and active sites such as Al and Si. Adsorption was carried out using a hot plate stirrer with various contact time: 30,60,90,120, and 150 minutes. The results showed that composite succeeded in increasing- pH from 2.6 to 7.0 and reducing Fe concentration from 13.006 to 0.1484 ppm (98,86%) and Mn concentration from 30.59 to 20.283 ppm (33,69%). The adsorption capacities of the composite were 1,286 mg/g for Fe and 1,031 mg/g for Mn. It can be concluded that composite is a good adsorbent for removing iron from acid mine drainage.

**Keywords:** Acid mine drainage, Adsorption, Capacity, Composite, Effectiveness

## Introduction

Coal mining industries play an important role in the country's economy. Indonesia is the ~~third-third~~ largest coal producer ~~in the world globally~~, with ~~total production of~~ 323.3 million tonnes in 2018 (*BP Statistical Review of World Energy*, 2019). ~~The-However, the~~ process of overburden removal causes the exposure of sulfide minerals associated with acid mine drainage (AMD), where a heavy acidic wastewater with high concentrations of dissolved ferrous and non-ferrous metal sulphates and salts (Roca and Fuentes, 2019). AMD ~~has potential effect to can~~ contaminate land and surface watercourses, harming plants, humans, wildlife, and aquatic animals.

~~In coal mining, the most common heavy metals of AMD are iron (Fe) and manganese (Mn)~~ AMD's most common heavy metals are iron (Fe) and manganese (Mn) in coal mining. There are many ~~treatments of heavy metal~~ heavy metal treatments in wastewater, but adsorption has been described as an efficient technique because of its effectiveness in extracting contaminants from dilute solutions (Patterer, 2017). The selection of this adsorbent is based on its abundant availability. Claystone (clay) is composed of hydrous aluminum silicate (Al<sub>2</sub>O<sub>3</sub>.2SiO<sub>2</sub>.2H<sub>2</sub>O) and has strong sorption of heavy metals dissolved in water (Musso et al., 2014). Zeolite consists of [SiO<sub>4</sub>]<sup>4-</sup> and [AlO<sub>4</sub>]<sup>5-</sup> bonds ~~which are~~ connected by oxygen atoms to form a zeolite framework. Zeolites contain empty space occupied by free water molecules, making it possible to use them as adsorbents in wastewater (Catri, 2016). The advantage of activated carbon from coconut shell compared to other materials (such as rice husks, wood, bamboo, bagasse, and peanut shells) is that coconut shell has more micropores and lower ash content (Li et al., 2009). Overall, the adsorbents had not been optimally utilized, and the combination effectiveness remains uncertain. Therefore, the objectives of this study were to evaluate the combination of claystone from coal overburden, zeolite, and activated carbon from coconut shell as a composite to decrease Fe and Mn concentrations from AMD.

Commented [U1]: Please cite according to journal format

Commented [U2]: Please cite according to journal format

Commented [U3]: Please cite according to journal format

Commented [U4]: Please cite according to journal format

Commented [U5]: Please cite according to journal format

Commented [U6]: Please cite according to journal format

## Methods

### Materials

This study used claystone from overburdened material in coal mining, zeolite, coconut shell, HCl p.a (merck), NaOH p.a (merck), and distilled water.

Claystone was collected from a coal overburden located in Bontang East Kalimantan. Claystone-First, claystone was cleaned, aerated, crushed, and sieved with a 100 mesh sieve. Claystone-Next, claystone washed with distilled water, filtered, and dried at 105°C for 4 hours. Afterwards, claystone was chemically activated by adding 300 ml of 3M NaOH into a beaker glass filled with 150 grams claystone for 3 hours. The-Next, the solution was filtered with filter paper, washed with distilled water, and filtered again. Claystone-Finally, claystone was physically activated by heating it in a furnace at 700°C for 30 minutes and then cooled to room temperature (Nwosu- et al., 2018; Mukarrom et al., 2020).

**Formatted:** Normal, Left, Indent: First line: 0 cm, Tab stops: Not at 2.25 cm

Zeolite from Klaten Central Java was cleaned, crushed, and sieved with 100 mesh sieve. Zeolite was soaked in distilled water for 24 hours at room temperature, filtered and dried at 120° C for 24 hours. Then it was chemically activated by adding 300 ml of 3M HCl into a beaker glass filled with 150 grams zeolite for 3 hours. The solution was filtered with filter paper and washed with distilled water. Zeolite is physically activated by drying it at a temperature of 80°C for 24 hours and cooled to room temperature

**Commented [U7]:** Please cite according to journal format

Coconut shell carbon crushed and sieved with 100 mesh sieve. It is activated by adding 300 ml of 4M HCl into a beaker glass filled with 150 grams coconut shell carbon for 24 hours. The solution was filtered with filter paper and washed with distilled water. Activated carbon then heated in an oven at 110°C for 3 hours and cooled to room temperature (Tan et al., 2017; Pranoto et al., 2020).

**Commented [U8]:** Please cite according to journal format

After prepared, those adsorbent materials (i.e., claystone, zeolite, and coconut shell carbon) were then characterized by X-Ray Diffraction (XRD)

### Composite Making

Composite made by mixing activated claystone, activated zeolite and activated carbon from coconut shell with 3 ratio (Claystone[C]:Zeolite[Z]:Activated carbon[A]) = 50:25:25, 25:25:50 and 25:50:25. Composites were characterized by Surface Area Analyzer Surface Area Analyzer characterized composites to determine the surface area of composites. Composite with the largest surface area was used as the adsorbent to remove iron and manganese from acid mine drainage.

**Commented [U9]:** please include picture of sample before mixing

### Acid Mine Drainage (AMD) Sampling

AMD was taken from a coal mine located in Bontang East Kalimantan. AMD was analyzed by Atomic Absorption Spectroscopy (AAS) to determine the concentration of iron and manganese. The initial concentration of iron is 13.006 ppm, and manganese is 30.59 ppm.

**Commented [U10]:** It possible to include map to show sampling location and condition of water contain AMD

### Removal of Iron (Fe) and Manganese (Mn) With Composite

Adsorption was carried out by preparing 250 ml of AMD water sample in a beaker glass where a composite (2.5 g) was also put into the beaker glass. The glass was then placed on a hot plate stirrer to mix the AMD water and composite by adjusting the rotation speed and temperature. This contact time procedure (30, 60, 90, 120, and 150 minutes). When the adsorption finished, the solution was filtered using filter paper, checked the pH solution.

Subsequently, the solution was analyzed again by AAS testing to determine the remaining concentration of iron and manganese after adsorption. The amount of iron and manganese ion adsorbed per composite mass unit (adsorption capacity) (mg/g) and adsorption effectiveness (%) was calculated by the following equation (Balintova et al., 2014):

$$\frac{x}{m} = \frac{(C_0 - C_e).V}{W} \quad (1)$$

$$Q = \frac{(C_0 - C_e)}{C_0} \times 100\% \quad (2)$$

Where  $\frac{x}{m}$  is adsorption capacity, Q is adsorption percentage or adsorption effectiveness,  $C_0$  is initial concentration,  $C_e$  is the equilibrium concentration of iron and manganese in solution, V is the volume of solution in litres, and W is mass of composite.

## Results and Discussion

### XRD Characterization

#### Claystone

The XRD analysis of claystone before activation (Fig.1) indicated that claystone from coal overburden contains kaolinite, illite, and montmorillonite. This indication was suggested by the diffraction peaks at  $2\theta$ . Illite ( $Al_2H_2KO_{12}Si_4$ ) appeared at  $2\theta = 12^\circ; 20.2^\circ; 22^\circ; 23.5^\circ; 47.5^\circ; 55^\circ; 57.5^\circ; 60.5^\circ; 63^\circ$ . Montmorillonit ( $Al_2CaO_5O_{12}Si_4$ ) appeared at  $2\theta = 4.5^\circ; 12^\circ; 20.8^\circ; 30.9^\circ; 36.5^\circ; 46^\circ; 47.2^\circ; 48.5^\circ; 50.8^\circ$ . Kaolinit ( $Al_2O_9Si_2$ ) appeared at  $2\theta = 23.5^\circ; 27; 35.8^\circ; 37.5^\circ; 38.2^\circ; 55^\circ; 57.5^\circ; 60.2^\circ; 62.5^\circ; 75^\circ; 76.5^\circ$ .

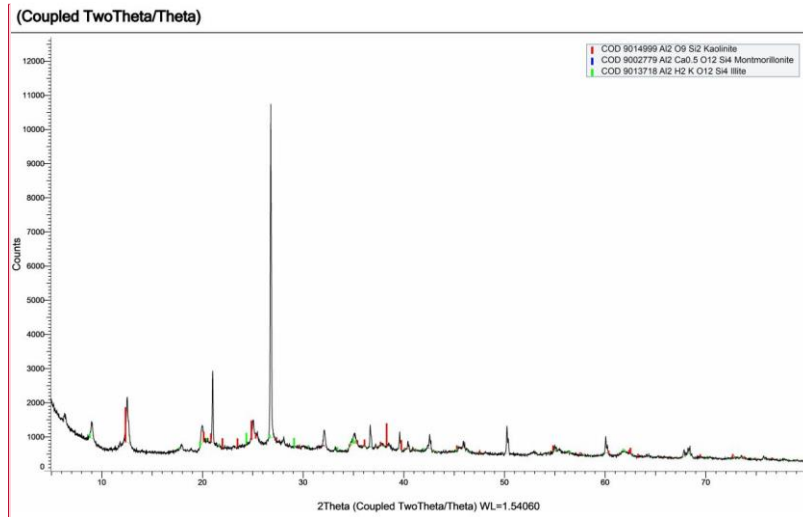


Figure 1. XRD diffractogram of claystone before activation

Commented [U11]: Please cite according to journal format

Commented [U12]: font size to small. Quick difficult to read. It possible to enlarge the font size

The diffractogram of activated claystone (Fig.2) suggested the increased intensity. The stronger diffraction intensity, the more areas of mineral crystals contained in claystone. It also showed the appearance of new peaks at  $2\theta = 21^\circ ; 26.5^\circ ; 34.5^\circ ; 39.5^\circ ; 40.3^\circ ; 42^\circ ; 46^\circ ; 50^\circ ; 55.5^\circ ; 56.2^\circ ; 60^\circ ; 64^\circ ; 66^\circ ; 68.8^\circ ; 69.3^\circ ; 73.6^\circ ; 75.8^\circ ; 77.8^\circ ; 80^\circ$  (quartz).

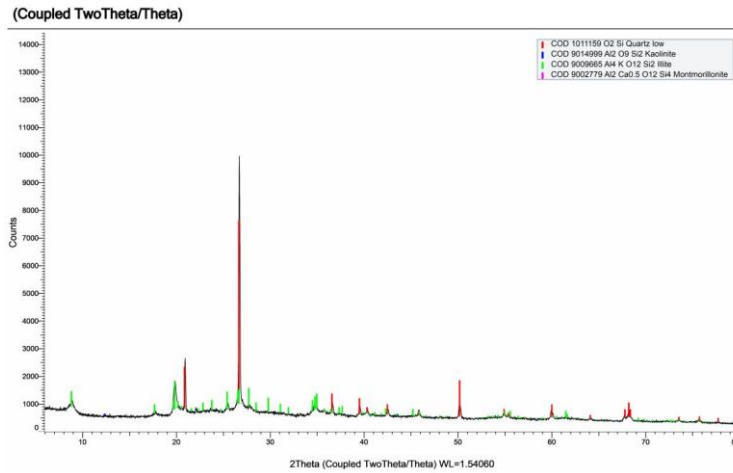
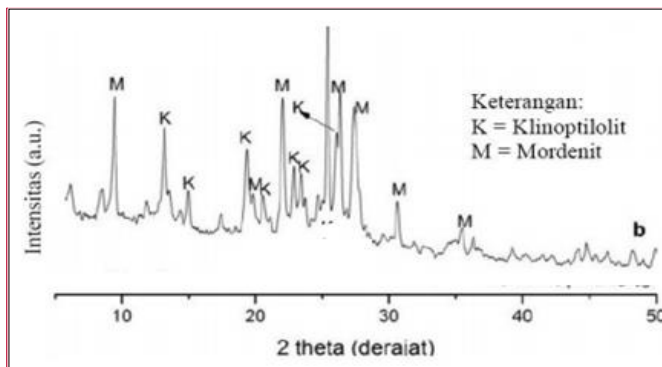


Figure 2. XRD diffractogram of claystone after activation

### Zeolite

The XRD analysis (Fig.3) showed that diffractogram natural zeolite appeared at  $2\theta = 9.516; 4.516; 4.076; 3.404; 3.269; 2.935$  and  $2.549$  with quite high intensity (mordenite). In addition, peaks with high intensity appears at  $2\theta = 6.808; 5.976; 4.625; 4.353; 3.921; 3.834; 3.535$  and  $3.439$  (clinoptilolite).



**Commented [U13]:** please change the language of legend to English

Figure 3. XRD diffractogram of zeolite before activation

A Diffractogram of activated zeolite (Fig.4) showed ~~that there was no significant changing on the diffractogram but peaks intensity increased~~no significant change on the diffractogram but increased intensity after activating. It indicated that the activation process ~~can~~could remove impurities on zeolite so increasing the crystallinity.

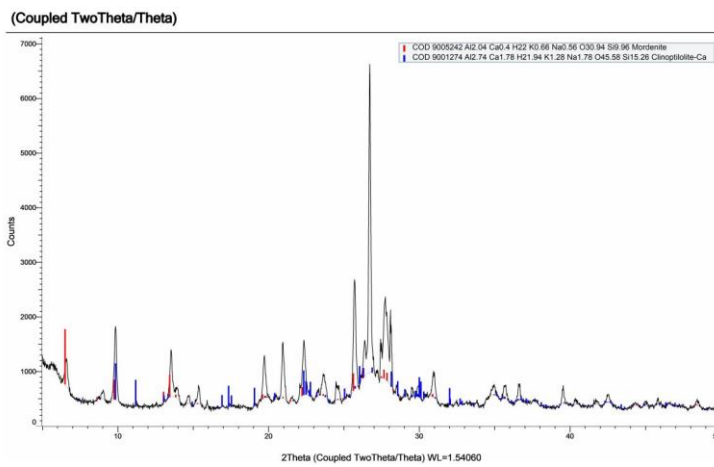


Figure 4. XRD diffractogram of zeolite after activation

#### Activated Carbon

XRD diffractogram of coconut shell carbon at the wavelength of 1.54060 angstroms (Fig.5) showed that the peaks tend to widen and irregular, indicated that coconut shell carbon from Bontang has an amorphous crystal structure.

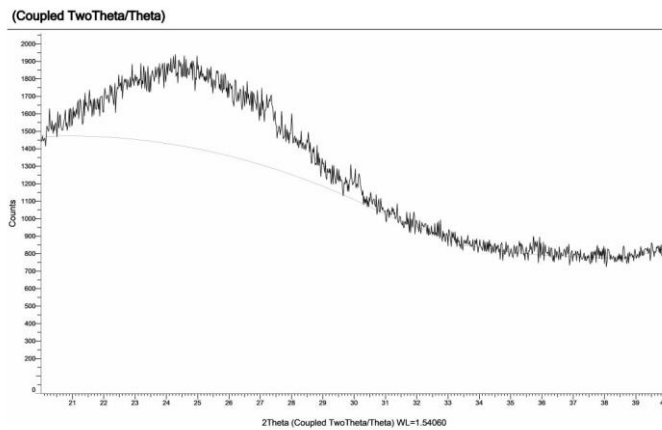


Figure 5. XRD diffractogram of coconut shell carbon

XRD diffractogram of activated carbon from coconut shell (Fig.6) shows that there were new peaks : manganoeudialyte ( $C_2 64H_4 56Al_0 75Ca_{18} Ce_0 18F_0 39Fe_3 6K_1 17Mn_5 72Na_{47} 84Nb_0 87O_{254} 37Si_{75} 57Sr_2 43Ti_0 57Zr_9$ ) identified by the appearance of  $2\theta = 12^\circ ; 22^\circ ; 22.5^\circ ; 23.4^\circ ; 26.2^\circ ; 29.5^\circ ; 30^\circ ; 30.4^\circ ; 30.6^\circ ; 31.3^\circ ; 34.6^\circ ; 35.4^\circ ; 35.6^\circ ; 37.6^\circ ; 37.8^\circ ; 38.7^\circ ; 39.7^\circ$ . Fayalite ( $Fe_2O_4Si$ ) identified by the appearance of  $2\theta = 25^\circ ; 29.1^\circ ; 29.3^\circ ; 31.6^\circ ; 34^\circ ; 35^\circ ; 37.3^\circ$ . Cristobalite ( $O_2Si$ ) identified by the appearance of  $2\theta = 22.2^\circ ; 28.4^\circ ; 31.4^\circ ; 36.1^\circ$ .

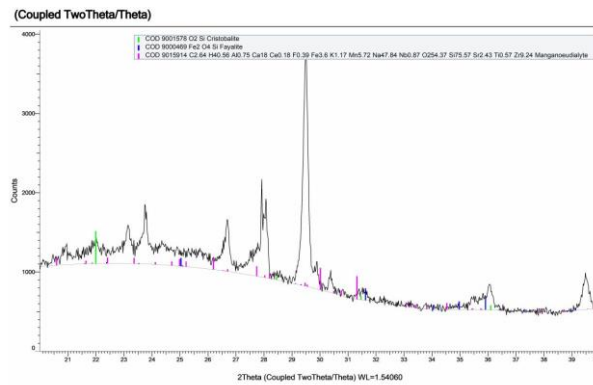


Figure 6. XRD diffractogram of activated carbon

### SAA Characterization

Surface area analysis was carried out using Brunauer Emmet Teller (BET) method to determine the surface area of each composite. The results are shown in Table 1. There are 3-three composites with different ratio of claystone/claystone ratios, zeolite, and activated

carbon from ~~coconut~~ coconut shell (C:Z: A). The ~~ratios-proportions~~ ratios-proportions of composite A, B, and C were 50: 25: 25, 25: 25: 50, and 25: 50: 25, respectively.

Table 1 showed that composite B is the best composite because of its largest surface area (62.4423 m<sup>2</sup>/g). ~~Composite~~ In addition, composite B had the smallest pore size (3.75808 nm) and the largest pore volume (0.022073 cm<sup>3</sup>/g). Therefore, composite B was chosen ~~to be used~~ as an adsorbent in the adsorption of iron (Fe) and manganese (Mn) in AMD.

**Table 1. Composites Surface Area**

Composite	Pore Size (nm)	Pore Volume (cm <sup>3</sup> /g)	Total Surface Area (m <sup>2</sup> /g)
A	6.1804	0.011915	37.9774
B	3.7581	0.022073	62.4423
C	6.5718	0.008740	32.3444

**SEM Characterization**

~~Composite B was tested by SEM-EDX Spectrum~~ SEM-EDX Spectrum tested composite B to analyze composite surface morphology before and after adsorption. Figure 7 showed that composite had a porous morphology, indicated that the physical and chemical activation processes succeeded in cleaning the impurities on the surface of materials. ~~Pores~~ In addition, pores in adsorbent play ~~an~~ an important role in absorbing heavy metals.

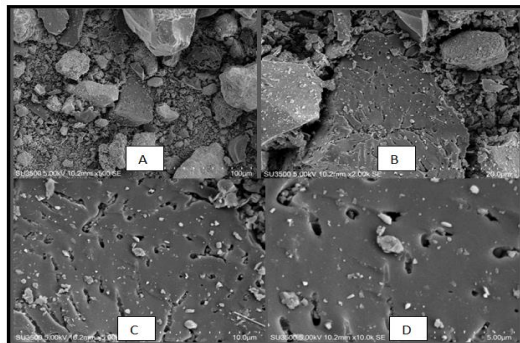


Figure 7. Composite surface morphology before adsorption.  
a.500x magnification b.2000x magnification  
c.5000x magnification d.10000x magnification

Figure 8 showed that some of the pores are closed, and the appearance of ~~the~~ the pore was lower than composite surface morphology before adsorption. It indicated that pores in ~~the~~ the composite ~~have-had~~ have-had been filled with heavy metals ~~which are~~ absorbed during the adsorption process.

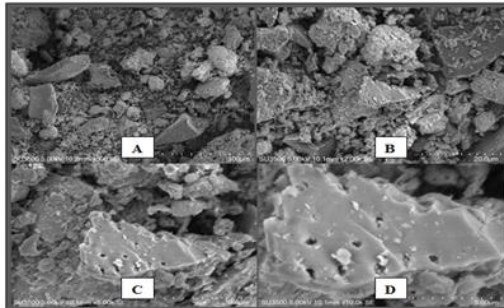


Figure 8. Composite surface morphology after adsorption.  
a.500x magnification b.2000x magnification  
c.5000x magnification d.10000x magnification

This study used ~~the technique of~~ EDS (Energy Dispersive Spectroscopy) or EDX (Energy Dispersive X-Ray) to get quantitative results from ~~the~~ SEM test. EDS is produced from X-ray characteristic by firing ~~an~~ X-ray on ~~the~~ desired position so that ~~certain-specific~~ peaks represent ~~the elements in its elements~~. The principle of EDX is reading electron affinities. Based on the EDX graph (net intensity vs electrons energy in each shell), the main ~~element-component~~ of ~~the~~ composite is ~~a~~ carbon (C) with 51.9% percentage weight before adsorption and 79% after adsorption (Table 2). ~~After-Furthermore, after~~ adsorption, iron in composite increased from 0.4 to 2.4%, indicated that composite succeeded in absorbing iron from AMD.

**Table 2. Percentage Weight of Elements in Composite**

Element	Percentage weight before adsorption (%wt)	Percentage weight after adsorption (%wt)
C	51,9	79
O	34,6	0
Na	0,8	0,3
Mg	0,2	0,1
Al	2,7	4,3
Si	6,9	11,2
K	0,7	1
Ca	1,7	1,8
Fe	0,4	2,4

### Iron and Manganese Adsorption

#### *pH Increasing After Adsorption*

Figure 9 showed that 2.5 grams of composite succeeded increasing AMD pH- from the initial pH of 2.6 to 7.2. ~~the-The Effectiveness-effectiveness~~ of pH increasing at 30 minutes of contact time is 62.86%, 60 minutes is 63.38%, 90 minutes is 64.38%, 120 and 150 minutes is 63-, 89%. The average effectiveness is 63.68%. The pH increasing indicated that ~~the~~ composite has succeeded in absorbing iron so that the concentration of iron in AMD is lower than ~~the~~ initial concentration. In addition, the presence of Na, Mg, K, and Ca cations in the composite had ~~the an~~ ability on increasing pH.



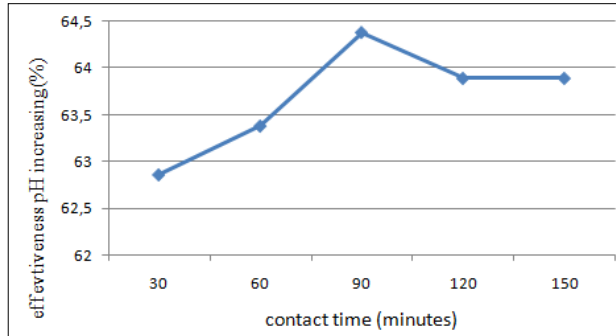


Figure 9. Effectiveness of pH increasing after adsorption

*Effectiveness of Decreasing the Iron and Manganese Concentration*

Based on Figure 10, the effectiveness of decreasing the iron concentration at 30 minutes of contact time is 98.86% (from an initial concentration of 13.006 to 0.1484 ppm), 60 minutes is 98.46% (from an initial concentration of 13.006 to 0.1998 ppm), 90 minutes is 97.61% (from an initial concentration of 13.006 to 0.3114 ppm), 120 minutes is 99.24 % (from an initial concentration of 13.006 to 0.0988 ppm), and 150 minutes is 99.61% (from an initial concentration of 13.006 to 0.0510 ppm). Therefore, the average effectiveness of decreasing the iron concentration is 98.76%. The optimum contact time for adsorbing iron concentration is 30 minutes. It means composite succeeded adsorbing iron concentration, so and it meets the environmental quality standard.

Commented [U14]: by whom?? International standart? Local standart?

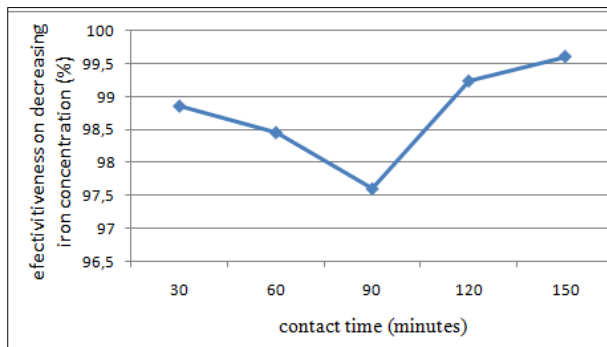


Figure 10. Effectiveness of decreasing the iron concentration

The adsorption effectiveness of composite at 30 minutes of contact time is 33.69% (from initial concentration 30.590 ppm to 20.283 ppm), 60 minutes is 41.38% (from initial concentration 30.590 ppm to 17.931 ppm), 90 minutes is 39.13% (from initial concentration 30.590 ppm to 18.620 ppm), 120 minutes is 32.84% (from initial concentration 30.590 ppm to 20.544 ppm), and 150 minutes is 38.19. % (from initial concentration 30.590 ppm to

18.905 ppm). The average effectiveness of decreasing Mn concentration is 37.046%. ~~Composite Thus, composite succeeded in decreasing-reducing~~ manganese concentration ~~although not yedespite not~~ meeting the environmental quality standard (Fig.11).

Commented [U15]: Which standart?

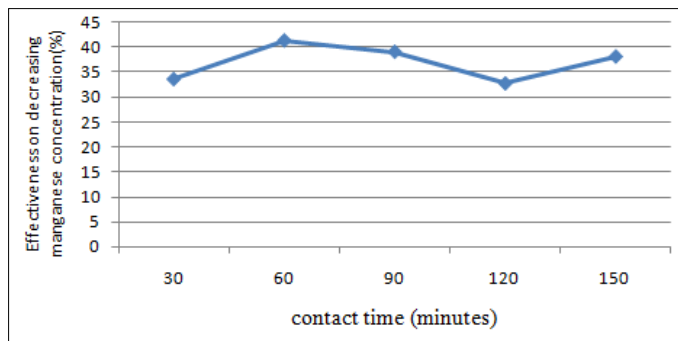


Figure 11. Effectiveness of decreasing the manganese concentration

Based on the experimental results, ~~the effectiveness of~~ decreasing manganese concentration is not as high as ~~the effectiveness of~~ decreasing iron concentration, where the effectiveness of Mn is around 44%, while Fe reaches 99%. According to research conducted by Kerndoff and Schnitzer, 1980, shows that at pH 2.4 the order of adsorption is as follows: Hg > Fe > Pb > Cu = Al > Ni > Cr = Zn = Cd = Co = Mn. In addition, the periodic table of the elements shows that the electronegativity of iron is greater than ~~the~~ manganese element, ~~which supports so that~~ the experimental results of this study show that the absorption percentage of Fe is greater than Mn. The order of ion absorption ability in water due to ion selectivity to the adsorbent media is  $Fe^{3+} > Al^{3+} > Pb^{2+} > Ba^{2+} > Sr^{2+} > Zn^{2+} > Cu^{2+} > Fe^{2+} > Mn^{2+} > Ca^{2+} > Mg^{2+} > K^{+} > NH_4^{+} > H^{+} > Li^{+}$ . Therefore, according to the ion selectivity, this study shows ~~that~~ Fe is more strongly adsorbed than Mn. This is also in line with the research conducted by Stumm and Morgan, 1981 in Pan and Tseng, 2003 which shows that the absorption of dissolved Mn from a solution can be achieved at high pH conditions, and Mn absorption will run slowly at pH less than 8.

Commented [U16]: Cite according to journal format

#### Adsorption Capacity

Adsorption capacity is the amount of heavy metal absorbed by each gram of adsorbent. ~~Based For example, based~~ on the ~~results of the adsorption~~ adsorption results with 250 ml AMD, 2.5 grams composite, and contact times of 30, 60, 90, 120, and 150 minutes, the adsorption capacity of ~~the~~ composite can be seen in Figures 12 and 13.

Adsorption with 30 minutes contact time, the adsorption capacity is 1.286 mg/g. It means that each 1 gram of composite can absorb as much as 1.286 mg of Fe metal. The changing of adsorption capacity is not too significant with the addition of contact time up to 150 minutes (the adsorption capacity was still at around 1.2 mg/g) (Fig.12). ~~This is in line with the results of the AAS test for Fe metal after adsorption, which showed that at a composite mass of 2.5 grams with a contact time of 30 minutes, the composite had absorbed a lot of Fe until the composite was saturated, so the absorption was no longer effective as the increasing of contact time.~~

Commented [U17]: Please simply this sentence for easy understanding by reader

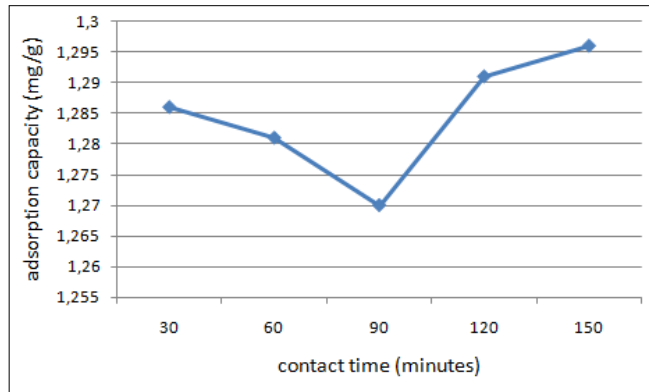


Figure 12. ~~Composite~~ The composite adsorption capacity of iron metal

In a composite mass of 2.5 grams with a contact time of 30 minutes, the adsorption capacity is 1.031 mg/g. The adsorption capacity increased to 1.266 mg/g at 60 minutes of contact time, then decreased to the range of 1.1 mg/g ~~on~~ at 90 to 150 minutes (Fig.13). This is in line with the results of the AAS test for Mn metal; that the optimum contact time is 60 minutes.

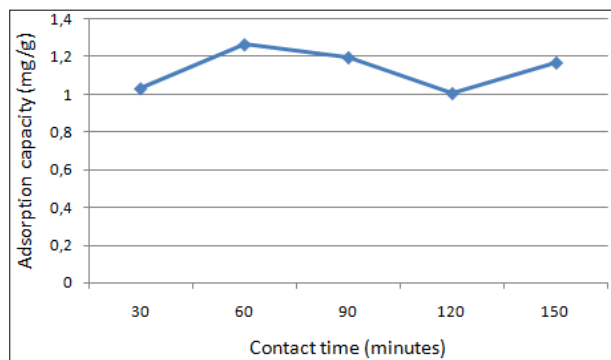


Figure 13. ~~Composite~~ The composite adsorption capacity of manganese metal

### Conclusions

Claystone from coal overburden, zeolite, and activated carbon from coconut shell ~~are~~ is recognized to be a ~~low~~ low-cost adsorbent to remove iron and manganese metals from coal acid mine drainage. The best composite produced from 25% claystone, 25% zeolite, and 50% activated carbon from coconut shell. Composite succeeded in decreasing iron metal concentration from acid mine drainage to meet so it meets the environmental quality standard. The optimum contact time for adsorbing iron concentration is 30 minutes, with effectiveness- decreasing 98.86% (from an initial concentration of 13.006 ppm to 0.1484

ppm). The optimum contact time for adsorbing metal concentration is 60 minutes, with effectiveness- decreasing 41.38% (from initial concentration 30.590 ppm to 17.931 ppm). Composite succeeded in decreasing manganese concentration although not yet meeting the environmental quality standard. The effectiveness of decreasing manganese concentration is not as high as the effectiveness of decreasing iron concentration, where the effectiveness of Mn is around 44%, while Fe reaches 99%. The adsorption capacity of iron is 1.286 mg/g, and manganese is 1.266 mg/g.

#### Acknowledgements

The authors are grateful to Mr. Era and Mr. Raymond for facilitating the sample of acid mine drainage from Bontang East Kalimantan.

#### References

- [1] Balintova. M., Holub. M., Stevulova. N., Cigasova. J., & Tesarcikova. M., "Sorption in acidic environment-biosorbents in comparison with commercial adsorbents", *Chemical Engineering*, 39, 2014.
- [2] Catri. C. R., "The Effectiveness of Natural Zeolite as Metal Absorbent Copper (II) in Pool Water With Coloumn Adsorption Method", *Jurnal Penelitian Saintek*, 21(2), 87-95, 2016.
- [3] Diola. M. B. L., & Orozco. C. "Improved Removal of Copper Ions from Aqueous Solution Using NaOH-Pretreated Coco Peat", *ASEAN Engineering Journal*, 4(1), 93-103, 2015.
- [4] Kerndorff. H., and Schnitzer. M., "Sorption of Metals on Humic Acid", *Geochim Cosmochim Acta*, 44, 1577-1581, 1980.
- [5] Li. W., Peng. J., Zhang. L., Yang. K., Xia. H., Zhang. S., & Guo. S. H., "Preparation of activated carbon from coconut shell chars in pilot-scale microwave heating equipment at 60 kW", *Waste management*, 29(2), 756-760, 2009.
- [6] Long. N. Q., Vuong. H. T., Ha. H. K. P., Kuniawan. W., Hinode. H., & Baba. T., "Preparation, characterization and H<sub>2</sub>S adsorptive removal of ion-exchanged zeolite X", *ASEAN Engineering Journal*, 5(1), 4-14, 2016.
- [7] Mukarrom. F., Karsidi. R., Gravitiani. E., Astuti. F., & Maharditya. W., "The assessment of claystone, quartz and coconut shell charcoal for adsorbing heavy metals ions in acid mine drainage", *Materials Science and Engineering*, 858, 1, p. 012040, 2020.
- [8] Musso. T. B., Parolo. M. E., Pettinari. G., & Francisca. F. M., "Cu (II) and Zn (II) adsorption capacity of three different clay liner materials", *Journal of environmental management*, 146, 50-58, 2014.
- [9] Nwosu. F. O., Ajala. O. J., Owoyemi. R. M., & Raheem. B. G., "Preparation and characterization of adsorbents derived from bentonite and kaolin clays", *Applied Water Science*, 8(7), 195, 2018.

- [10] Pan, S. C., Lin, C. C., & Tseng, D. H., "Reusing sewage sludge ash as adsorbent for copper removal from wastewater". *Resources, Conservation and Recycling*, 39(1), 79-90, 2003.
- [11] Patterer. S., Bavasso. I., Sambeth. J., Medici. F., "Cadmium removal from aqueous solution by adsorption on spent coffee grounds", *Chemical Engineering Transactions*, 60, 157-162, 2017.
- [12] Petroleum, B., "BP statistical review of world energy report", *BP: London*, UK, 2019.
- [13] Pranoto, Martini. T., Astuti. F., & Maharditya. W., "Test The Effectiveness and Characterization of Quartz Sand/Coconut Shell Charcoal Composite as Adsorbent of Manganese Heavy Metal", *Materials Science and Engineering*, 858, 012041, 10, 2020.
- [14] Roca. Y. B., & Fuentes. W. S. "Use of Nanoclay as an Adsorbent to Remove Cu (ii) from Acid Mine Drainage (AMD)", *Chemical Engineering Transactions*, 73, 241-246, 2019.
- [15] Tan. I. A. W., Abdullah. M. O., Lim. L. L. P., & Yeo. T. H. C., "Surface modification and characterization of coconut shell-based activated carbon subjected to acidic and alkaline treatments", *Journal of Applied Science & Process Engineering*, 4(2), 186-194, 2017.