

SIM-Analytical landslides prone area by using Sentinel- 2 Satellite

by Al Hussein Flowers Rizqi Al Hussein Flowers Rizqi

Submission date: 12-Dec-2022 10:47PM (UTC-0500)

Submission ID: 1979818131

File name: Prasetya_2021_IOP_Conf._Ser._Earth_Environ._Sci._782_022025.pdf (924.26K)

Word count: 2966

Character count: 15893

PAPER · OPEN ACCESS

Analytical landslides prone area by using Sentinel-
2 Satellite Imagery and geological data in Google
Earth Engine (a case study of Cinomati Street,
Bantul Regency, Daerah Istimewa Yogyakarta
Province, Indonesia)

To cite this article: **13** H N E Prasetya *et al* 2021 *IOP Conf. Ser.: Earth Environ. Sci.* **782** 022025

11 View the [article online](#) for updates and enhancements.

You may also like

- 20** - [Rivers running green: water hyacinth](#)
- 22** - [tion monitored from space](#)
Niels Janssens, Louise Schreyers, Lauren Biermann et al.
- 19** - [Using satellite data to assess](#)
- 10** - [agement frequency and rate of](#)
[regeneration on heather moorlands in](#)
[England as a resilience indicator](#)
K J Lees, J Buxton, C A Boulton et al.
- 8** - [Landslide Hazard Identification Based on](#)
[Deep Learning and Sentinel-2 Remote](#)
[Sensing Imagery](#)
Jun Xia, Hongjiang Liu and Linfu Zhu



The Electrochemical Society
Advancing solid state & electrochemical science & technology

243rd ECS Meeting with SOFC-XVIII

More than 50 symposia are available!

Present your research and accelerate science

Boston, MA • May 28 – June 2, 2023

[Learn more and submit!](#)

Analytical landslides prone area by using Sentinel-2 Satellite Imagery and geological data in Google Earth Engine (a case study of Cinomati Street, Bantul Regency, Daerah Istimewa Yogyakarta Province, Indonesia)

H N E Prasetya^{1*}, T Aditama², G I Sastrawiguna², A F Rizqi² and A Zamroni²

¹Department of Mining Engineering, Institut Teknologi Nasional Yogyakarta, Indonesia.

²Department of Geological Engineering, Institut Teknologi Nasional Yogyakarta, Indonesia.

E-mail: *harisberjaya@gmail.com

Abstract. The incidence of landslides and the fact that a large number of people live in areas vulnerable to landslides lead to a high death toll in Java Island, Indonesia – more than 1,112 people in the period 1999 to 2005. The study site has an area of 55.56 hectares, along Cinomati Street, Dlingo, and Pleret Sub District, Bantul District, Daerah Istimewa Yogyakarta Province, Indonesia. The methods that use in this study are, Sentinel-2 Imagery and Geological data. The purpose of this study is to determine the landslides prone area in the study site. The methods used in this study are Sentinel-2 Satellite Imagery and geological data. Along the Cinomati road based on geological data, it has a weak area that has the potential for landslides from the continuation of the Opak fault and rock formation boundaries. Landslide area are locations with complex geological conditions and sparse vegetation. In other rare vegetation besides the location of landslides, it also needs to be aware of other potential landslides, because this research is limited to sentinel images with a density of 10m².

1. Introduction

The incidence of landslides and the fact that a large number of people live in areas vulnerable to landslides lead to a high death toll in Java Island, Indonesia – more than 1,112 people in the period 1999 to 2005. In Java subduction has an influence on its geological history. Oblique subduction in Java has characteristics such as displaced and fractured terraces, major strike-slip faults, folding and thrusting. Landslides frequently occur in Java, with mountainous areas and a humid tropical climate. A number of factors supporting landslides in Java are as follows: first, Java has rough terrain consisting of cliffs, hills, and mountains; second, heavy rainfall is prevalent from October to April; third, 36 of 129 Indonesian volcanoes are located in Java, producing highly weathered volcanic materials [1]. The high rainfall intensity and high seismic activity rendered Java one of the most susceptible regions for landslides, especially in the mountainous southern regions. Assessment of both seismic and landslide hazards in Southern Yogyakarta has been well created. Some studies have identified the features of Yogyakarta seismic and landslide hazards [2].



Content from this work may be used under the terms of the Creative Commons Attribution 3.0 licence. Any further distribution of this work must maintain attribution to the author(s) and the title of the work, journal citation and DOI.

Published under licence by IOP Publishing Ltd

The study site located roughly one hundred kilometres north of the Java Subduction Zone. Java Island has a complex geology and geomorphology. The northern zone is dominated by the folded area, the middle is dominated by the active volcanic arc, and the southern part of Java is dominated by the elevated southern mountain, including the study area (Southeast part of Yogyakarta City). The study area is generally a part of the Graben of the Bantul. The Opak river flows through the middle part of the study area, which is often correlated with typical Opak Fault [2].

Geological approaches define the tectonic motion, basin settings, and lithological features [3]. Landslide geologic considerations include lithology [4], geological structure, and rock weathering [5]. In the current morphological, it is important to understand the causes of landslides. Present morphological and rock conditions may clarify the past morphological conditions such as the rocks that formed it or lithology, the geological structure, the existing erosion, and sedimentation processes [6]. The ability to monitor landslides at many points of an urban slope where there are dangerous areas could be a very useful way to assess the degree of hazard and thus predict and/or prevent accidents and deaths [7].

The purpose of this study is to determine the landslides prone area in the study site. The methods used in this study are Sentinel-2 Satellite Imagery and geological data. A similar study [8] conducted in another location, in the Jou-Jou mountain area, Taiwan, was supported by geological data in the form of the lithology of gravel, rock, and sandstone which was also influenced by water erosion. In Addition, the vegetation index can also be used as a reference in identification to monitor and assess the location of landslides based on satellite image data, where vegetation can act as a reinforcing medium on the slopes through the roots of the vegetation. Sentinel-2 is a satellite constellation of the European Space Agency that monitors the land environment on the surface of the earth. Sentinel-2 satellites have a 10 m spatial resolution. The Constellation Sentinel-2 has a 5-day revisit period at the Equator and is widely distributed to the general public. A benefit of this optical remote sensing picture is that it has more spectral details and is more sensitive to landslide-related disturbances [9]. Furthermore, geological data describing the regional geological conditions are important for the identification of landslides [10]. This study should be able to help local governments to provide landslides early warning systems.

2. Methods

The study site has an area of 55.56 hectares, along Cinomati Street, Dlingo, and Pleret Sub District, Bantul District, Daerah Istimewa Yogyakarta Province, Indonesia (Figure 1).

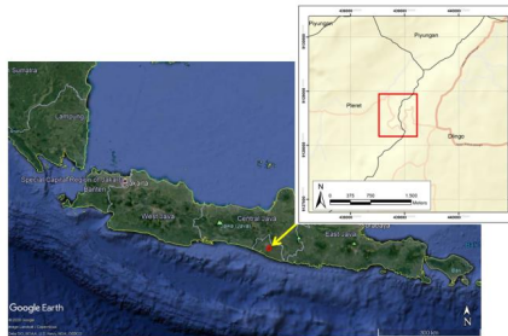


Figure 1. The study site.

The methods that use in this study are analysis Sentinel-2 Imaginary with Google Earth Engine and analysis Geological data based on recent research. Google has archived many datasets, one of which is sentinel-2 satellite imagery. Google Earth Engine is a map computation platform that provides data on

18 the earth's surface at high spatial and temporal resolution, which can be used to measure changes in the earth's surface, be it forests, agricultural land, and the surface with a certain period of time [10].

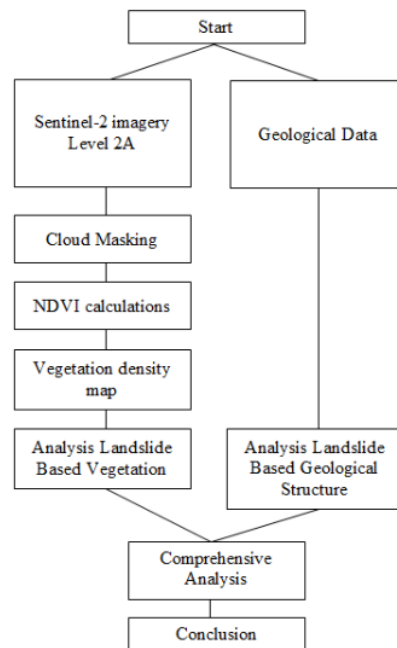


Figure 2. Research flow diagram.

The data processing procedure uses sentinel-2 imagery processed on the google earth engine with javascript programming, cloud masking filtering is performed on the image to eliminate the clouds surrounding the study field, where the NVDI (Vegetation Index) algorithm has been used to correct the level 2a sentinel-2 satellite images used in this analysis, the radiometric BOA (Bottom Of Atmosphere) and the geometric for vegetation index. Unlike standardisation). The band used in the measurement in the sentinel-2 picture is band 8 (NIR) and band 4 (Red) having the same spatial resolution of 10 metres. The band used in the measurement in the sentinel-2 picture is band 8 (NIR) and band 4 (Red) having the same spatial resolution of 10 metres square.

The NDVI measurement is obtained from the standardization difference between the red band and the near infrared band, divided by the number of the two bands in the picture. We can see the NDVI algorithm in equation (1).

$$NDVI = \frac{NIR-RED}{NIR+RED} \quad (1)$$

Legend :

NIR : Closer Infrared Band

Red : Red Band

The NDVI value varies from -1 to +1 with the higher the value the higher the density of the vegetation. The maximum set of classifications is illustrated in Table 1 [11].

Table 1. NDVI classification

Distance of NDVI	The Vegetation Cluster
$-1 \leq \text{NDVI} < 0.2$	Non-Vegetation
$0.2 < \text{NDVI} < 0.4$	Rare Vegetation
$0.4 < \text{NDVI} < 0.6$	Moderate Vegetation
$0.6 < \text{NDVI} \leq 1$	Steep Vegetation

3. Results and discussion

3.1. Landslide potential based on NDVI data

The study site shows the alignment with the major fault, namely Opak Fault based on the regional geological map of Yogyakarta sheet (Figure 3). Based on the geological map, the study site consists the Semilir Formation (Tmse) and Nglanggeran Formation (Tmn). The study site is in the boundary of both formations (Figure 3). Research area is located in border of Yogyakarta low land and Southern Mountain Zone. There is a main fault bordered in western part of research area, specific named by Opak Fault (Figure 3). In the previous information, it was known that the research location was in lineament with the Opak fault, where the continuity of the Opak fault was in the southern part of the study location, in a location close to the fault area. The minor fault of Opak segment in research area is interpreted as Right Slip Fault [12]. This fault movement has same movement with the Watugajah Fault in the Subzone of Baturagung [6] but this fault started to active at Middle Pliocene [13].

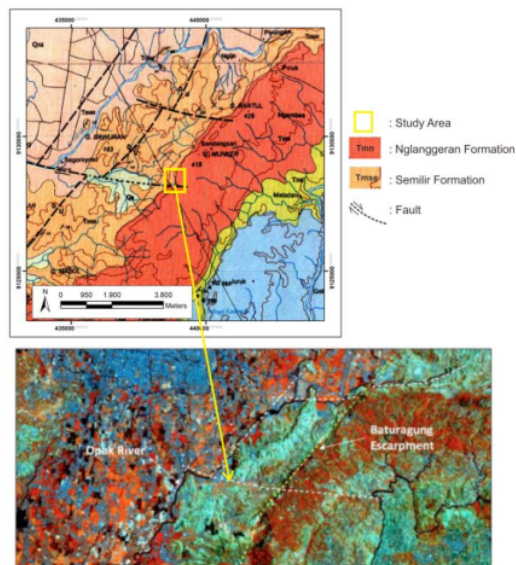


Figure 3. The geological map of Yogyakarta (top), source: systematic geological map of Java, sheet Yogyakarta 1408-2 & 1407-5, scale 1:100,000, and Opak River Escarpment Lineament (bottom) [2].

The number of connections or the density of the connection would be denser [2]. This indicates that the location has weak areas that are easily weathered and eroded parts that have complex levels of structure. Apart from being located in the continuity of the fault, based on the geological map of the Yogyakarta sheet, it also shows that the location is located on the border of Semilir Formation (Tmse) and Nglanggeran Formation (Tmn). Semilir Formation is consisted of tuff, pumice breccias, lapilistone (Surono et al, 1992). The age of Semilir Formation based on U-Pb method is about 20 million ago (Early Miocene) (Smyth, 2005).

Rainfall water can enter the soil and rock gaps through rock fractures that are caused by numerous fractures and position faults such that areas with a steep slope become unstable, this is due to a rise in soil unit weight due to water infiltration, Two adjacent materials with opposing material types also form the slip plane [14]. Normally landslides will be in the direction of the slope.

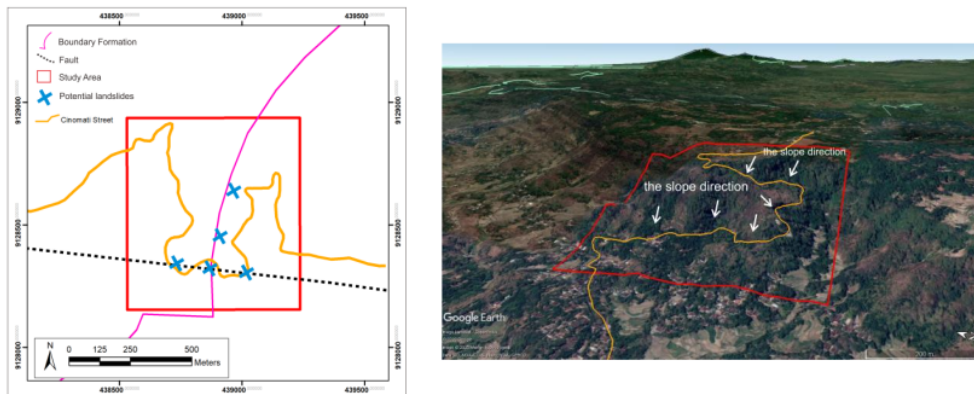


Figure 4. Landslide potential based on geological data (left) and slope direction on study site area by using Google Earth 3D terrain imagery (right).

3.2. Landslide potential based on NDVI data

Based on the results of the GEE ⁶ satellite imagery NDVI processing in 2020, 4 classes have been obtained, namely non-vegetation, sparse vegetation, moderate vegetation, and dense vegetation. In 2020, the non-vegetation showed in no colour (transparent), sparse vegetation showed in red colour, moderate vegetation showed in yellow colour and the dense vegetation showed in green colour (Figure 4).

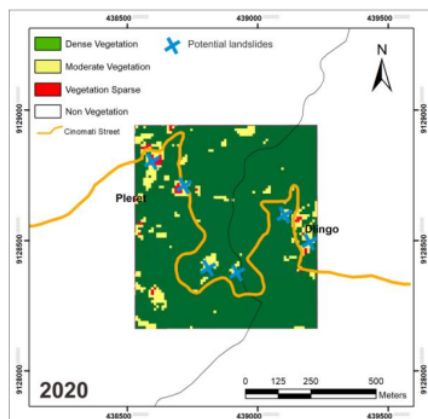


Figure 5. The Vegetation density of 2020 based on Sentinel-2 imagery processed with NDVI algorithm and potential landslide.

The classification data is taken from 5-9 ²⁴ months of the year, which is the dry season as an ideal time to monitor the main vegetation so that it is not obscured by grass. Even though in 2020 it has not been fully covered along the road with dense vegetation with a percentage of 91%, with some spot vegetation being 8% medium and light vegetation 1% with an area as shown in (Table 2). Locations along roads that have light to moderate vegetation are considered to have little slope reinforcement

compared to dense vegetation, this is a parameter in determining the location of potential landslides based on vegetation density.

Table 2. The kind of closure land use and areal

Year	Non Vegetation	Sparse Vegetation	Moderate Vegetation	Dense Vegetation
2020	0	0.510	4,604	49,713

3.3. Landslide prone area based both potential data

At the landslide location it is also an intersection between the geological structure lines and the rock formation boundaries, so that the weak area of the geological condition is supported by vegetation conditions that rarely cause landslides in this location. The rare vegetation causes the soil could not storage the water safely that the landslide occurs in many times especially at raining season. The weak area become easy to weathered by rainfall.

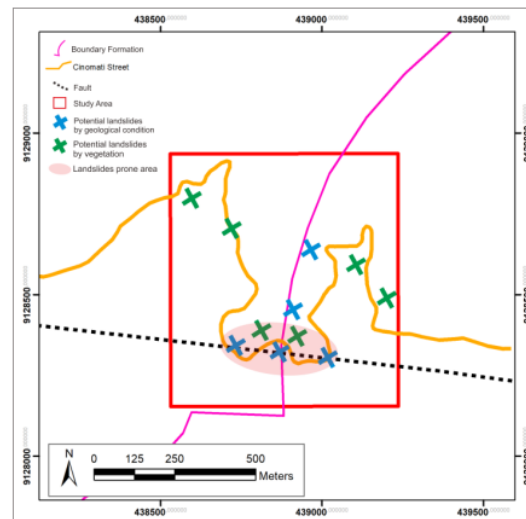


Figure 6. Geological data combine with NDVI data.

4. Conclusions

Along the Cinomati road based on geological data, it has a weak area that has the potential for landslides from the continuation of the Opak fault (minor fault) and rock formation boundaries. Landslide area are locations with complex geological conditions and sparse vegetation. In other rare vegetation besides the location of landslides, it also needs to be aware of other potential landslides, because this research is limited to sentinel images with a density of 10 and does not discuss topographic slope conditions. The rare vegetation also causes the soil could not storage the water safely that the landslide occurs in many times especially at raining season

References

- [1] Zamroni A, Kurniati A C and Prasetya H N E 2020 The assessment of landslides disaster mitigation in Java Island, Indonesia: a review *J. Geosci. Eng. Environ. Technol.* **5** pp 139–44
- [2] Saputra A, Gomez C, Delikostidis I, Zawar-Reza P, Hadmoko D S, Sartohadi J and Setiawan M A 2018 Determining earthquake susceptible areas southeast of Yogyakarta, Indonesia—Outcrop

- analysis from structure from motion (SfM) and geographic information system (GIS) *Geosciences* **8** p 132
- [3] Suprpto N, Zamroni A and Yudianto E A 2017 One Decade of The “Lusi” Mud Volcano: Physical, Chemical and Geological Dimensions *Chemistry (Easton)*. **26** pp 615–29
- [4] Safaei M, Omar H, Huat B K and Yousof Z B M 2012 Relationship between Lithology Factor and landslide occurrence based on Information Value (IV) and Frequency Ratio (FR) approaches—Case study in North of Iran *Electron J Geotech Eng* **17** pp 79–90
- [5] Chigira M, Wang W-N, Furuya T and Kamai T 2003 Geological causes and geomorphological precursors of the Tsaoling landslide triggered by the 1999 Chi-Chi earthquake, Taiwan *Eng. Geol.* **68** pp 259–73
- [6] Zamroni A, Sugarbo O, Prastowo R, Widiatmoko F R, Safii Y and Wijaya R A E 2020 The relationship between Indonesian coal qualities and their geologic histories *AIP Conference Proceedings* vol 2245 (AIP Publishing LLC) p 70005
- [7] Pichorim S F, Gomes N J and Batchelor J C 2018 Two solutions of soil moisture sensing with RFID for landslide monitoring *Sensors* **18** p 452
- [8] Lin W-T, Chou W-C, Lin C-Y, Huang P-H and Tsai J-S 2005 Vegetation recovery monitoring and assessment at landslides caused by earthquake in Central Taiwan *For. Ecol. Manage.* **210** pp 55–66
- [9] Yang W, Wang Y, Sun S, Wang Y and Ma C 2019 Using Sentinel-2 time series to detect slope movement before the Jinsha River landslide *Landslides* **16** pp 1313–24
- [10] Midekisa A, Holl F, Savory D J, Andrade-Pacheco R, Gething P W, Bennett A and Sturrock H J W 2017 Mapping land cover change over continental Africa using Landsat and Google Earth Engine cloud computing *PLoS One* **12** e0184926
- [11] Al-Doski J, Mansor S B and Shafri H Z M 2013 NDVI differencing and post-classification to detect vegetation changes in Halabja City, Iraq *IOSR J. Appl. Geol. Geophys.* **1** pp 1–10
- [12] Riefky P and Subagyo P 2015 Interpretasi Pergerakan Sesar Opak Pasca Gempa Yogyakarta 2006 Melalui Pendekatan Studi Geomorfologi Tektonik pada Daerah Wonolelo dan Sekitarnya, Kecamatan Pleret, Kabupaten Bantul, Provinsi Daerah Istimewa Yogyakarta [Interpretation of the Movement of t *PROCEEDING, SEMINAR NASIONAL KEBUMIHAN KE-8 Academia-Industry Linkage 15-16 OKTOBER 2015; GRHA SABHA PRAMANA* (Departmen Teknik Geologi)
- [13] Prasetyadi C, Sudarno I, Indranadi V B and Surono S 2011 Pola dan Genesa Struktur Geologi Pegunungan Selatan, Provinsi Daerah Istimewa Yogyakarta dan Provinsi Jawa Tengah. Badan Geologi [Patterns and Genes of Geological Structures of the Southern Mountains, Yogyakarta Special Region Province and Central Java Pr *J. Geol. dan Sumberd. Miner.* **21** pp 91–107
- [14] Zamroni A 2019 Rekonstruksi Bidang Gelincir Longsor dengan Metode Geolistrik di Kawasan Taman Nasional Taipingshan, Propinsi Yilan, Taiwan [Landslide Reconstruction Field Using Geoelectric Methods in the Taipingshan National Park Area, Yilan Province, Taiwan] *KURVATEK* **4** pp 11–8

Acknowledgements

Authors appreciate Institut Teknologi Nasional Yogyakarta, Indonesia and Direktorat Jenderal Pendidikan Tinggi, Kementerian Pendidikan dan Kebudayaan (The Directorate General of Higher Education, Ministry of Education and Culture) that supported funding for this research.

SIM-Analytical landslides prone area by using Sentinel- 2 Satellite

ORIGINALITY REPORT

25%

SIMILARITY INDEX

20%

INTERNET SOURCES

16%

PUBLICATIONS

9%

STUDENT PAPERS

PRIMARY SOURCES

1	Submitted to East Carolina University Student Paper	4%
2	academic-accelerator.com Internet Source	3%
3	nectar.northampton.ac.uk Internet Source	2%
4	www.mdpi.com Internet Source	2%
5	journal.uir.ac.id Internet Source	2%
6	link.springer.com Internet Source	1%
7	Aditya Saputra, Christopher Gomez, Danang Sri Hadmoko, Junun Sartohadi. "Coseismic landslide susceptibility assessment using geographic information system", Geoenvironmental Disasters, 2016 Publication	1%

8	Jun Xia, Hongjiang Liu, Linfu Zhu. "Landslide Hazard Identification Based on Deep Learning and Sentinel-2 Remote Sensing Imagery", <i>Journal of Physics: Conference Series</i> , 2022	1 %
Publication		
9	Aditya Saputra, Trias Rahardianto, Mohamad Dian Revindo, Ioannis Delikostidis et al. "Seismic vulnerability assessment of residential buildings using logistic regression and geographic information system (GIS) in Pleret Sub District (Yogyakarta, Indonesia)", <i>Geoenvironmental Disasters</i> , 2017	1 %
Publication		
10	M K Mukhtar, Supriatna, M D M Manessa. "The validation of water quality parameter algorithm using Landsat 8 and Sentinel-2 image in Palabuhanratu Bay", <i>IOP Conference Series: Earth and Environmental Science</i> , 2021	1 %
Publication		
11	fahatan.unmul.ac.id	1 %
Internet Source		
12	www.sustinerejes.com	1 %
Internet Source		
13	pertambangan.fst.uinjkt.ac.id	1 %
Internet Source		
14	Kirk M Stueve. "Spatial patterns of ice storm disturbance on a forested landscape in the	1 %

Appalachian Mountains, Virginia", Area, 3/2007

Publication

15

repository.unej.ac.id

Internet Source

1 %

16

Aditya Saputra, Christopher Gomez, Ioannis Delikostidis, Peyman Zawar-Reza, Danang Sri Hadmoko, Junun Sartohadi. "Preliminary identification of earthquake triggered multi-hazard and risk in Pleret Sub-District (Yogyakarta, Indonesia)", *Geo-spatial Information Science*, 2020

Publication

<1 %

17

Karlina Triana, Koko Hermawan. "Slope Mass Rating-based Analysis to Assess Rockfall Hazardon Yogyakarta Southern Mountain, Indonesia", *Research Square*, 2020

Publication

<1 %

18

Alemayehu Midekisa, Felix Holl, David J. Savory, Ricardo Andrade-Pacheco, Peter W. Gething, Adam Bennett, Hugh J. W. Sturrock. "Mapping land cover change over continental Africa using Landsat and Google Earth Engine cloud computing", *PLOS ONE*, 2017

Publication

<1 %

19

iopscience.iop.org

Internet Source

<1 %

20

search.datacite.org

Internet Source

<1 %

21

journal.itny.ac.id

Internet Source

<1 %

22

Nurul Hasniati Badrul Hisham, Nurhanisah Hashim, Noraain Mohamed Saraf, Noorfatekah Talib. "Monitoring of Rice Growth Phases Using Multi-Temporal Sentinel-2 Satellite Image", IOP Conference Series: Earth and Environmental Science, 2022

Publication

<1 %

23

assets.researchsquare.com

Internet Source

<1 %

24

discol.umk.edu.my

Internet Source

<1 %

25

Zhang, Huaizhen, Xiaomeng Wang, Jianrong Fan, Tianhe Chi, Shun Yang, and Ling Peng. "Monitoring Earthquake-Damaged Vegetation after the 2008 Wenchuan Earthquake in the Mountainous River Basins, Dujiangyan County", Remote Sensing, 2015.

Publication

<1 %

26

Wentao Yang, Yujie Wang, Yunqi Wang, Chao Ma, Yuhong Ma. "Retrospective deformation of the Baige landslide using optical remote sensing images", Landslides, 2019

Publication

<1 %

Exclude quotes On

Exclude matches Off

Exclude bibliography On