



listyani theo <listyanitheophila@gmail.com>

---

**Successfully Published ! (THE INFLUENCE OF PHYSICAL PROPERTIES.....)**

---

IJASER <submit@ijaser.org>

12 Maret 2022 17.52

Kepada: listyani theo <listyanitheophila@gmail.com>

Dear Authors,

**T. Listyani R.A.\* and Dianto Isnawan**

**Congratulations!** Your Paper title "**THE INFLUENCE OF PHYSICAL PROPERTIES ON THE COMPRESSIVE STRENGTH OF THE ROCK IN THE SAMIGALUH AREA, KULON PROGO, INDONESIA**" has been successfully published in current issue.

You can check on this Link <https://ijaser.org/view2.php?issue=2>

With Regards  
Editor-in-Chief  
IJASER



listyani theo &lt;listyanitheophila@gmail.com&gt;

---

## Invitation for article submission Applied Science and Engineering

---


**IJASER** <submit.ijaser@gmail.com>  
Balas Ke: submit@ijaser.org  
Kepada: listyanitheophila@gmail.com

11 Januari 2022 23.36

Dear Author,

**International Journal of Applied Science and Engineering Review (IJASER) ISSN: 2582-6271** welcome papers in the field of applied science and engineering. We are dedicated to quality publication that has development and research results inside the broad range of subfields in the applied sciences and engineering. Our main objective is to deliver scientific information to the readers.

Current Issue: **Volume 3 Issue 1 Jan-Feb 2022**

IJASER(10.52267/ijaser) is a member of **CrossRef(DOI)** 

We are accepting the manuscripts for this current issue.

The article processing charges are: **60USD** (including DOI links)

Authors can submit manuscripts to [submit@ijaser.org](mailto:submit@ijaser.org)

**Manuscripts can also be submitted online:** <https://ijaser.org/submission.php>

You can visit our website: <https://ijaser.org>

With Regards,

**Dr. Osamah Ibrahim Khalaf.**

Editor-in-chief

IJASER

You may [unsubscribe](#) to stop receiving our emails.



listyani theo &lt;listyanitheophila@gmail.com&gt;

---

## Invitation for article submission Applied Science and Engineering

---


**IJASER** <submit.ijaser@gmail.com>  
Balas Ke: submit@ijaser.org  
Kepada: listyanitheophila@gmail.com

12 Januari 2022 21.58

Dear Author,

**International Journal of Applied Science and Engineering Review (IJASER) ISSN: 2582-6271** welcome papers in the field of applied science and engineering. We are dedicated to quality publication that has development and research results inside the broad range of subfields in the applied sciences and engineering. Our main objective is to deliver scientific information to the readers.

Current Issue: **Volume 3 Issue 1 Jan-Feb 2022**

IJASER(10.52267/ijaser) is a member of **CrossRef(DOI)** 

We are accepting the manuscripts for this current issue.

The article processing charges are: **60USD** (including DOI links)

Authors can submit manuscripts to [submit@ijaser.org](mailto:submit@ijaser.org)

**Manuscripts can also be submitted online:** <https://ijaser.org/submission.php>

You can visit our website: <https://ijaser.org>

With Regards,

**Dr. Osamah Ibrahim Khalaf.**

Editor-in-chief

IJASER

You may [unsubscribe](#) to stop receiving our emails.



listyani theo &lt;listyanitheophila@gmail.com&gt;

---

**Submission Acknowledgement (Paper Id ASER00144)**

---

**IJASER** <submit@ijaser.org>

10 Februari 2022 14.01

Kepada: listyani theo &lt;listyanitheophila@gmail.com&gt;

Dear Authors,

**T. Listyani R.A.\* and Dianto Isnawan**

Thank you for submitting a manuscript to International Journal of Applied Science and Engineering Review. The submitted research paper has been sent to reviewer panel.

Paper title: **THE INFLUENCE OF PHYSICAL PROPERTIES ON THE COMPRESSIVE STRENGTH OF THE ROCK IN THE SAMIGALUH AREA, KULON PROGO, INDONESIA**

Paper ID: **ASER00144**Submission Date: **10/02/2022****We will get back to you after review within 5 to 7 days.**

Thank you for considering this journal as a venue for your works.

If you received this Submission email, please reply **RECEIVED** for confirmation

With Regards,

Editor-in-Chief

IJASER (International Journal of Applied Science and Engineering Review)

Website: [www.ijaser.org](http://www.ijaser.org)



listyani theo <listyanitheophila@gmail.com>

---

## Manuscript submission

---

**listyani theo** <listyanitheophila@gmail.com>  
Kepada: submit@jjaser.org

10 Februari 2022 09.24

Dear editor  
Attached is my manuscript for IJASER  
Thank you

Lis - ITNY  
Indonesia

---

 **10. IJASER Lis ITNY.docx**  
1266K

# THE INFLUENCE OF PHYSICAL PROPERTIES ON THE COMPRESSIVE STRENGTH OF THE ROCK IN THE SAMIGALUH AREA, KULON PROGO, INDONESIA

T. Listyani R.A.<sup>1\*</sup> and Dianto Isnawan<sup>1</sup>

<sup>1\*</sup>Geological Engineering Department, Faculty of Mineral Technology, Institut Teknologi Nasional Yogyakarta  
[\\*lis@itny.ac.id](mailto:lis@itny.ac.id)

## Abstract

The Samigaluh area, Kulon Progo, Indonesia, is composed of rocks from the Old Andesite and Jonggrangan Formations which have very different physical properties. The difference in physical properties certainly results in differences in the engineering properties of rocks, for example in terms of compressive strength. It is very interesting to study the relationship between physical properties and rock compressive strength in these two different formations, to find out the extent of the relationship between physical properties and rock engineering. An engineering geological survey was carried out simultaneously with the collection of six rock samples representing intrusive andesite, andesite (breccia and lava fragments) and tuff of the Old Andesite Formation (OAF), limestone (reef/calcarenite) Jonggrangan Formation. Furthermore, rock samples were analyzed physically (petrographically) and mechanically (compressive strength) in the laboratory.

The results of field surveys and analysis of laboratory data yield knowledge about the relationship between the physical properties of rocks and their compressive strength. The intrusion andesites and OAF andesites generally have a porphyroaphanitic texture, anhedral - subhedral, hypocristalline, inequigranular crystal form, with a massive structure, and the composition of plagioclase, quartz and accessory minerals (hornblende). Fine textured tuff, hypocristalline, in the form of glass and crystal tuffs. The Jonggrangan limestones are fine to medium textured, well sorted, grain supported, with variations of wackestone – packstone. The compressive strength of andesite is 39.98 – 49.36 MPa, calcarenite is 43.32 MPa, reef limestone is 20.44 MPa, and tuff is 11.15 MPa. The compressive strength of rock is influenced by texture (grain size/crystal) with a correlation coefficient of 68% (strong correlation), while rock composition (percentage of quartz) has a very weak correlation (correlation coefficient of 18%).

Keywords: correlation, physical properties, compressive strength, andesite, limestone.

## INTRODUCTION

The Kulon Progo hills are composed of various kinds of rocks, both sedimentary and igneous rocks. These rocks can be grouped into the Nanggulan Formation, Old Andesite Formation, Jonggrangan Formation, Sentolo Formation and Alluvial Deposits, and breakthrough rocks (Van Bemmelen, 1949; Rahardjo et al, 1977).

The Old Andesite Formation and Jonggrangan Formation are composed of very different rocks, where the Old Andesite Formation is dominated by relatively hard and coarse volcanic rocks, while the Jonggrangan Formation is mainly composed of layers of carbonate/carbonate sedimentary rock, relatively fine and soft grained. With these contrasting petrophysical differences, of course, the engineering properties of rocks will also be different.

Brotodiharjo (1979) stated that mineral hardness will determine the compressive strength of rocks. The hardness of this mineral depends on its mineral composition. Therefore, the compressive strength will be determined by the rock type. In addition, some physical properties of rocks that can affect the value of compressive strength are rock texture, porosity, the presence of fractures/cracks and weathering conditions of rock.

Physical properties of rocks affect the hydraulic characteristics of rocks (Listyani, 2020), besides that physical properties also affect the engineering properties of rocks (Brotodiharjo, 1979). Thus, rock physical properties have an important role in determining rock characteristics related to hydrogeological and engineering geology aspects.

This study specifically examines the differences in physical properties and compressive strength of these two formations, which is very interesting to do, to see how much the physical properties of rocks determine the value of compressive strength. The correlation between physical properties that appear in petrological/petrographic characteristics is discussed to determine the relationship between physical and mechanical properties of rocks.

## MATERIALS AND METHODS

### Geological Settings

The research area is included in the Dome in the Central Depression Zone according to Van Bemmelen (1949), especially in the Samigaluh District (Figure 1). The study area is composed of rocks from the Old Andesite and Jonggrangan Formation.

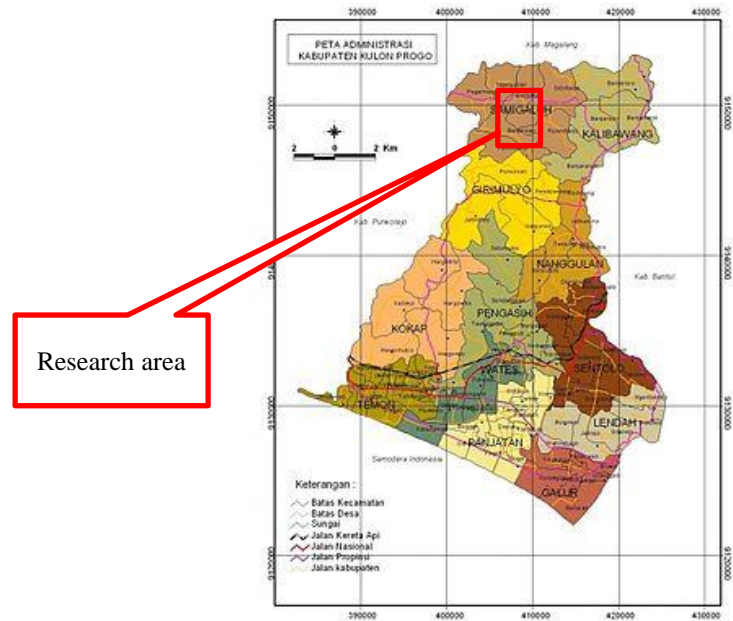


Figure 1. Research area is located in Samigaluh area, Kulon Progo District, Java, Indonesia.

The Old Andesite Formation is composed of rocks deposited in a volcanic environment, composed of breccia, lava, lapilli, tuff and sandstone. The dominant constituent lithology consists of andesite breccia with a matrix of tuff or tuffaceous sandstone, and fragments consist of pyroxene andesite to hornblende andesite. The Old Andesite Formation is the result of ancient volcanic activity, namely Mount Gadjah, Ijo and Menoreh. Meanwhile, the Jonggrangan Formation is composed of tuffaceous marl, calcareous sandstone with lignite insertions that move upwards into layered limestones and coral limestones that form reefs (Rahardjo et al., 1977).

**Field Sampling**

Six rock samples were selected to represent andesite intrusive rock; andesite lava, andesite breccia fragments and OAF tuff; and Jonggrangan limestones. The location of the side points can be seen in Table 1 and Figure 2. The description of the physical properties of rocks is carried out through direct observations in the field, including color, texture, structure and composition.

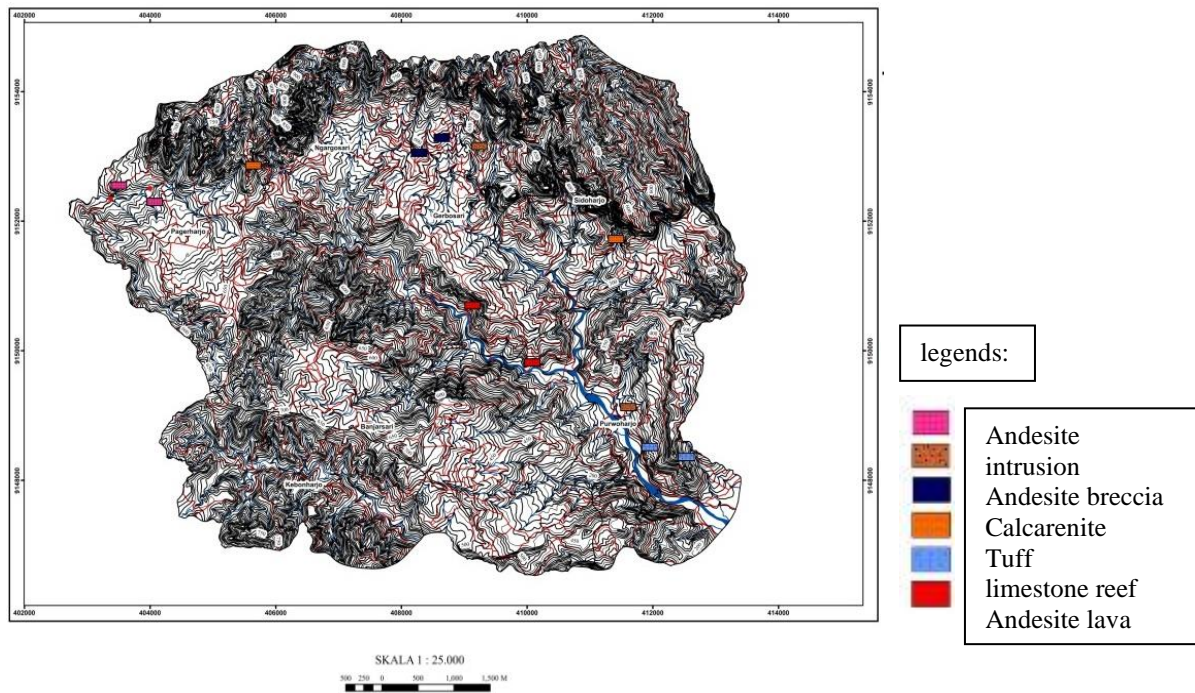


Figure 2. Map of the sampling location.

Table 1. Rock sampling locations.

No	VILLAGE	Coordinate (o)		CodeSample	Rock
		BT	LS		
1	Pagerharjo	-7.667568	110.123774	LDA	Andesite intrusion
2	Gerbosari	-7.659616	110.169162	LDG	Jonggrangan calcarenite
3	Sidoharjo	-7.661274	110.176048	LDD	Fragment of OAF andesite breccia
4	Sidoharjo	-7.674923	110,195895	LDC	OAF tuff
5	Purwoharjo	-7.703489	110.187473	LDF	limestone reefJonggrangan
6	Purwoharjo	-7,692100	110.187473	LDB	Andesite lava OAF

### Laboratory Analysis

Rock samples are analyzed to determine physical properties, including a description of the physical properties of rocks and their engineering properties (compressive strength). The description of rock physical properties was carried out megascopically against hand specimens and microscopically.

a. petrographic analysis

Determination of the physical properties of rocks is carried out by petrography, using a polarizing microscope at the Geological Laboratory of the Yogyakarta National Institute of Technology,

b. Rock compressive strength test

The compressive strength test was carried out in the laboratory at the Rock Mechanics Testing Laboratory of PT. Geomine Bara Studio, Yogyakarta. The compressive strength test uses the uniaxial compressive strength (UCS) method based on SNI ISO/IEC 17025:2008 to evaluate rock conditions.

This test is carried out based on a standard that requires sample dimensions that are in accordance with the testing standard, namely the length of the sample is at least twice the diameter of the sample. It also refers to several researchers such as Karaman et al (2015), Kabilan et al (2016) and Yurdakul et al (2011), who used sample dimensions with a length of more than twice the diameter.

### RESULTS

Brotodiharjo (1979) mentions internal factors (physical properties of rock) that affect its compressive strength including the texture and mineral composition of rocks.. Mineral composition greatly influences the resistance indicated by the compressive strength of rocks. Rock texture (grain size) can affect the compressive strength of rocks.

Minerals with a high level of hardness will have a high resistance. Sedimentary rocks that contain a lot of quartz mineral as cement will have a higher compressive strength value than sedimentary rocks that do not have a cement composition of quartz minerals. The greater the quartz mineral content, the higher the value of the compressive strength, while the weakest sedimentary rock is sedimentary rock with clay mineral composition. Therefore, the study of mineral composition in this study was carried out on the percentage of quartz minerals.

The rocks studied included igneous rocks (andesite breccia intrusions and fragments), sedimentary rocks (limestone) and pyroclastic rocks (tuff). The physical properties of these rocks are different and can be clearly observed in the field, both in fresh and weathered conditions. Megascopically, andesite found in general has a porphyroafanitic, subhedral, hypocrySTALLINE, inequigranular texture, with a composition of plagioclase, quartz, hornblende and opaque minerals. The tuff is light, soft, with a fine texture, subhedral, hypocrySTALLINE, and equigranular and composed of glass and plagioclase. Meanwhile, limestones are generally fine-medium textured, subrounded-rounded grain shape, well sorted and packed tightly, with carbonate and fossil mineral compositions. All rocks are found in a fresh state to weathered further, even into soil.

Some examples of the appearance of these rock outcrops can be seen in Figure 3. The petrographic description of these rocks can be seen in Table 2. Furthermore, the results of the compressive strength test can be seen in Table 3. Furthermore, the results of petrography and compressive strength tests were analyzed to see the relationship between physical properties vs. rock mechanical properties. The results of the analysis are presented in Figure 4-5.

The physical properties of rocks can mainly be determined by their texture and composition. The textures that can be studied include grain size, grain shape, and the relationship between grains. However, not all samples showed clear differences in the texture variables. The grain/crystal shape of the rocks studied generally shows anhedral-subhedral shape, so its correlation with compressive strength is difficult to study. The relationship between grains is also difficult to study, because all igneous rock samples show aphanitic porphyro characteristics, inequigranular; and limestone samples generally show a grain supported texture. Therefore, the only texture



variable that can be studied is the aspect of grain or crystal size. Meanwhile, a study of rock composition was carried out on the amount of quartz minerals,



Figure 3. Rock outcrops found in the field: andesite intrusion at Pagerharjo (left); andesite breccia in Sidoharjo (middle); and reef limestones in Purwoharjo (right).

Table 2. Petrographic description of the rocks studied.

Sample Code	Texture				Composition	Name of Rock
	Grain size (mm)	Shape	Relation			
			Sortation/ Crystallization	Fabric		
LDA	0.2-0.6	Subhedral-anhedral	Porphyroaphanitic, hipocrystalline	Inequigranular	Plagioclase 83%, quartz 7%, hornblende 6%, opaque mineral 4%	Andesite
LDG	0.2-0.6	Rounded-subrounded	Grain supported		Intraclass (20%), ooids (10%), carbonate mud (15%), and skeletal grains (55%)	Packstone
LDD	0.1-0.3	Subhedral-anhedral	Phaneroaphanitic, hipocrystalline	Inequigranular	Plagioclase (albite) 72%, quartz 5%, hornblende 15%, and opaque mineral 8%	Hornblende andesite
LDC	0.1-0.2	Subhedral-anhedral	Hypocrystalline		Plagioclase (albite) 45%, alkali feldspar 25%, quartz 5%, glass 15%, biotite 8%, opaque mineral 7%	Crytal tuff
LDF	0.02-0.05	Rounded-subrounded	Grain supported		Pellet (24%), carbonate mud (30%), skeletal grains (46%)	Packstone
LDB	0.1-0.4	Subhedral-anhedral	Porphyroaphanitic, hipocrystalline	Inequigranular	Plagioclase (andesine) 93%, quartz 5%, opaque mineral 2%	Andesite

Table 3. The results of the compressive strength of the rock under study.

Location	Sample Code	Rock	UCS Compressive Strength (MPa)
1	LDA	Andesite intrusion	39.98
2	LDG	Calkarenite	43.32
3	LDD	Fragment of andesite breccia	45.08
4	LDC	Tuff	11.15
5	LDF	limestone reef	20.44
6	LDB	Andesite lava	49.36

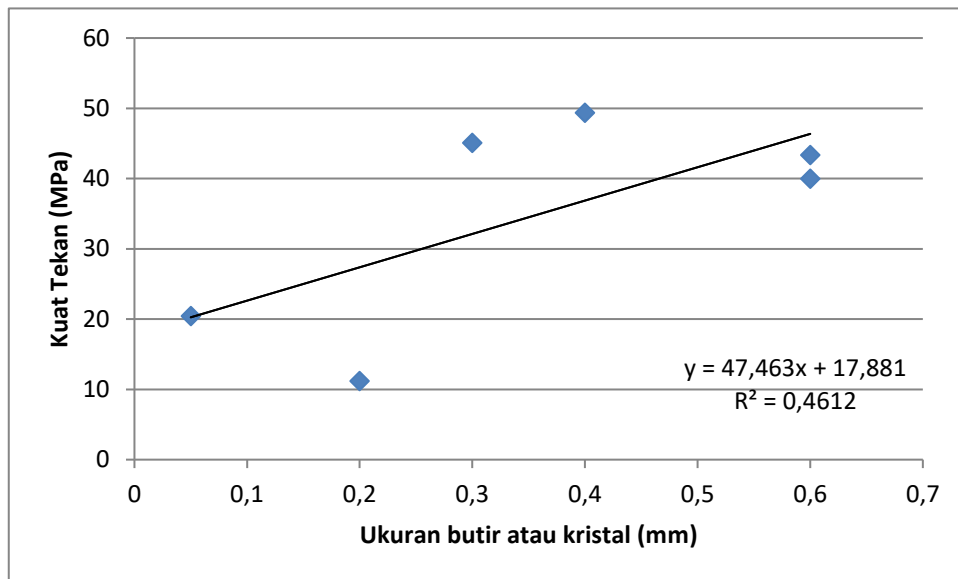


Figure 4. Relation of grain size (crystal) of rock to its compressive strength value.

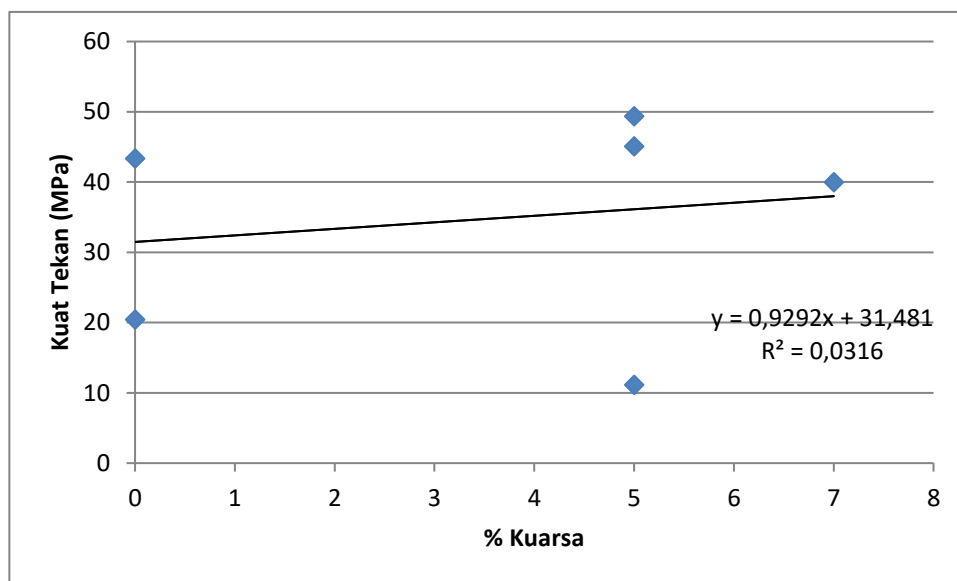


Figure 5. The relationship of the percentage of quartz in the rock to the value of its compressive strength.

The results of the regression test of the grain size and rock compressive strength variables showed a good relationship, with the  $R^2$  value of 0.46 which means it has a correlation coefficient of 68%. This value shows a strong correlation between the two variables (Sugiyono, 1997; Figure 4).

Meanwhile, the regression results of the relationship between the percentage of quartz and the compressive strength of rocks show a weak correlation.  $R^2$  value for this relationship is only 0.0316 or the correlation coefficient is 18%. This value is a value for a very low level of relationship (Sugiyono, 1997; Figure 5). This shows that the amount of quartz content is not a determinant of the size of the rock's compressive strength.

From the results of the regression test as presented in Figure 4-5, it shows that grain/crystal size plays a more important role in determining the compressive strength of the rock under study. The larger the grain size/crystal, the rock will have a higher compressive strength.

Meanwhile, the results of the correlation of compositions based on the percentage of quartz to the compressive strength of rocks give very low results, indicating that the presence of quartz has no effect on the compressive strength of rocks. The calcarenite limestone in LP 2 (LDG sample) shows a high compressive strength

value (43.32 MPa). Petrographically this rock is called packstone, dominated by a composition in the form of skeletal grains.

The intact rock sample of the calcarenite limestone shows high compressive strength, one of which is supported by a fairly large grain size. In addition, the process of compaction and lithification certainly greatly affects the physical properties of the rock to increase the hardness of the rock in the study area. Tuff has the lowest compressive strength value, this is supported by conditions in the field which show tuff which is fine grained, light and relatively soft.

## CONCLUSION

Igneous rocks analyzed in this study are andesite igneous rocks, both in the form of intrusion and OAF lava. The texture of this igneous rock is generally porphyroafanitic, anhedral - subhedral crystal form, hypocrySTALLINE, inequigranular, with a massive structure, with a dominant composition of plagioclase and accessory minerals in the form of hornblende. The OAF tuff shows a smooth, hypocrySTALLINE, with variations in glass tuff and crystalline tuff. Meanwhile, Jonggrangan limestone shows a fine – medium texture, well sorted, packed closed, and varies as wackestone – packstone.

The compressive strength values of rock samples in intrusive rocks as well as the two formations tested varied widely. Andesite rock has a high compressive strength value (39.98 – 49.36 MPa), as well as calcarenite (43.32 MPa). Reef limestone has a lower compressive strength, which is 20.44 MPa, while the lowest compressive strength value is shown by tuff of 11.15 MPa.

The correlation between physical properties and rock engineering properties in the tested samples is influenced by texture (grain size/crystal) with a correlation coefficient of 68% (strong correlation). Meanwhile, the rock composition represented by the percentage of quartz shows a very weak relationship with a correlation coefficient of 18%.

## Acknowledgment

The author would like to thank the Yogyakarta National Institute of Technology for providing financial assistance for internal research in 2021 so that this paper can be written. The author would also like to thank the field assistants, namely Rajawali, Abdul, Ega and Veggy, as well as all those who have assisted in the preparation of this manuscript.

## References

- National Standardization Agency, 2008, Test method for uniaxial rock compressive strength, SNI 2825 : 2008, Ministry of Public Works: Standard Management Information System: Building Construction Materials and Civil Engineering, Jakarta.
- Brotodiharjo, APP, 1979, Importance of Compressive Strength Tests on Rock/Soil in Geotechnical Investigations, Department of Public Works, Jakarta.
- Kabilan, N., Muttharam, M., Siva, A. and Philips, N., 2016, Prediction of Uniaxial Compressive Strength Using Point Load Index for Jointed Rock, IOSR Journal of Mechanical and Civil Engineering, Vol. 13, No. 3, h. 1–7.
- Karaman, K., Cihangir, F., Ercikdi, B., Kesimal, A. and Demirel, S., 2015, Utilization of the Brazilian Test for Estimating the Uniaxial Compressive Strength and Shear strength parameter, Journal of the Southern African Institute of Mining and Metallurgy, Vol. 115, No. 3, h. 185–192.
- Listyani RA, T., 2020, Identification of Petrophysical Rocks as Supporting Hydraulic Characteristics of Aquifers in the Code Sub-watershed, Yogyakarta, Geosapta Journal, Vol. 6 , No. 2, pp. 103-109, July 2020, Mining Engineering, FT, Univ. Mangkurat Hull.
- Sugiyono. 1997. Administrative Research Methods, Yogyakarta: CV. Alfabeta.
- Van Bemmelen, RW, 1949, The Geology of Indonesia, Vol.1A, Martinus Nijhoff, The Hague, Netherland.
- Wikipedia, 2021, Kulon Progo Regency, <https://id.wikipedia.org>, downloaded on March 11, 2021.

Yurdakul, M., Ceylan, H. and Akdas, H., 2011, A Predictive Model for Uniaxial Compressive Strength of Carbonate Rocks from Schmidt Hardness, Proc. of 45th US Rock Mechanics/Geomechanics Symposium, American Rock Mechanics Association, San Francisco, CA.



listyani theo &lt;listyanitheophila@gmail.com&gt;

---

**Acceptance Letter | Paper Id ASER00144 (THE INFLUENCE OF PHYSICAL PROPERTIES.....)**

---

IJASER &lt;submit@ijasera.org&gt;

15 Februari 2022 13.09

Kepada: listyani theo &lt;listyanitheophila@gmail.com&gt;

Dear Authors,

**T. Listyani R.A.\* and Dianto Isnawan**

**Congratulations!** The Editorial Team of the International Journal of Applied Science and Engineering Review (IJASER), is pleased to inform you that your manuscript. **“THE INFLUENCE OF PHYSICAL PROPERTIES ON THE COMPRESSIVE STRENGTH OF THE ROCK IN THE SAMIGALUH AREA, KULON PROGO, INDONESIA”** has been accepted for publication.

Please find an attachment for Acceptance Letter and copyright form and pay the publication fee of 60 USD through Paypal using a debit or credit card by this link: ( <http://ijasera.org/modeofpayment.php> ) using email ([editor@ijasera.org](mailto:editor@ijasera.org) ) and complete all formality as soon as possible so that we can proceed with the publication.

With Regards  
Editor-in-Chief  
IJASER

---

**2 lampiran** **ACCEPTANCE LETTER IJASER.pdf**  
57K **Copyright Form.pdf**  
498K



## ACCEPTANCE LETTER

Dear Authors,

**T. Listyani R.A.\* and Dianto Isnawan**

Congratulations! The Editorial Team of International Journal of Applied Science and Engineering Review (IJASER), is pleased to inform you that your manuscript, **“THE INFLUENCE OF PHYSICAL PROPERTIES ON THE COMPRESSIVE STRENGTH OF THE ROCK IN THE SAMIGALUH AREA, KULON PROGO, INDONESIA”** has been accepted for the publication.

Please note, as per the Instructions for authors, all manuscripts must be accompanied by a signed copyright form to progress through to the final stages of production. You are requested to send the copyright transfer agreement form after receiving this mail so that we can proceed with the publication. For your convenience the copyright form is attached herewith. Please print and sign the attached copyright form and send the scanned copy to the email address: [editor@ijaser.org](mailto:editor@ijaser.org)

You are requested to complete the payment formalities so that your article can be accommodated in latest issue of journal. We recommend electronic fund transfer to avoid postal delay in receiving the article fees at the editorial office. Once done you are requested to send an acknowledgement email along with payment receipt as an attachment.

With Regards



Editor-in-Chief

International Journal of Applied Science and Engineering Review (IJASER)

<http://ijaser.org/>



listyani theo <listyanitheophila@gmail.com>

---

## Submission Acknowledgement (Paper Id ASER00144)

---

**listyani theo** <listyanitheophila@gmail.com>  
Kepada: IJASER <submit@ijaser.org>

16 Februari 2022 09.35

Thank you for your response.  
[Kutipan teks disembunyikan]



listyani theo &lt;listyanitheophila@gmail.com&gt;

---

**Acceptance Letter | Paper Id ASER00144 (THE INFLUENCE OF PHYSICAL PROPERTIES.....)**

---

listyani theo <listyanitheophila@gmail.com>  
Kepada: IJASER <submit@ijaser.org>

21 Februari 2022 14.38

Dear editor

Before making a payment, let me make an inquiry to your journal. Please provide information or evidence so that we can ensure that your journal is not a predatory journal.

Thank you so much.

Regards,  
Lis-Indonesia

Pada tanggal Kam, 17 Feb 2022 pukul 14.49 IJASER <submit@ijaser.org> menulis:

[Kutipan teks disembunyikan]





listyani theo &lt;listyanitheophila@gmail.com&gt;

---

**Acceptance Letter | Paper Id ASER00144 (THE INFLUENCE OF PHYSICAL PROPERTIES.....)**

---

IJASER &lt;submit@ijaser.org&gt;

21 Februari 2022 19.04

Kepada: listyani theo &lt;listyanitheophila@gmail.com&gt;

Dear Author,

Our journal is approved by National Science Library. ( <https://portal.issn.org/resource/ISSN/2582-6271> ) We have published more than 80 articles in this journal. Our journal is published under a publication house **Chronopub Publications** ( <https://chronopub.org/> ). We have 4 journals under our publication house. We are also the CrossRef member. We provide DOI links to the published articles. You can feel free to ask if you have any other doubts.

With Regards,

Editor-in-chief

IJASER



listyani theo &lt;listyanitheophila@gmail.com&gt;

---

**Acceptance Letter | Paper Id ASER00144 (THE INFLUENCE OF PHYSICAL PROPERTIES.....)**

---

listyani theo <listyanitheophila@gmail.com>  
Kepada: IJASER <submit@ijaser.org>

9 Maret 2022 16.13

Dear editor....

Attached are my document for IJASER publications:

1. Final manuscript (word & pdf format)
2. Copyright form
3. Payment proof of publication fee via Mandiri bank teller Indonesia

I look forward to hearing from you about the publication

Thank you so much

Best regards,

Lis - ITNY - Indonesia

[Kutipan teks disembunyikan]

---

**4 lampiran****Final manuscript\_ IJASER Lis ITNY.pdf**

585K

**Final manuscript\_ IJASER Lis ITNY.docx**

961K

**Copyright IJASER.pdf**

454K

**Publication fee IJASER.pdf**

618K

# THE INFLUENCE OF PHYSICAL PROPERTIES ON THE COMPRESSIVE STRENGTH OF THE ROCK IN THE SAMIGALUH AREA, KULON PROGO, INDONESIA

T. Listyani R.A.<sup>1\*</sup> and Dianto Isnawan<sup>1</sup>

<sup>1</sup>Geological Engineering Department, Faculty of Mineral Technology, Institut Teknologi Nasional Yogyakarta  
[\\*lis@itny.ac.id](mailto:lis@itny.ac.id)

## Abstract

The Samigaluh area, Kulon Progo, Indonesia, is composed of rocks from the Old Andesite and Jonggrangan Formations, with very different physical properties. The difference in physical properties indeed results in the engineering properties of rocks, for example, in terms of compressive strength. Studying the relationship between physical properties and rock compressive strength in these two different formations is exciting to find out the extent of the relationship between physical properties and rock engineering. A geological engineering survey was carried out simultaneously with the collection of six rock samples representing intrusive andesite, andesite (breccia and lava fragments), and tuff of the Old Andesite Formation (OAF), limestone (reef/calcarenite) Jonggrangan Formation. Furthermore, rock samples were analyzed physically (petrographically) and mechanically (compressive strength) in the laboratory.

The results of field surveys and analysis of laboratory data yield knowledge about the relationship between the physical properties of rocks and their compressive strength. The intrusion andesites and OAF andesites generally have a porphyroaphanitic texture, anhedral - subhedral, hypocrySTALLINE, inequigranular crystal form, with a massive structure, and the composition of plagioclase, quartz, and accessory minerals (hornblende). Fine-textured tuff, hypocrySTALLINE, in the form of glass and crystal tuffs. The Jonggrangan limestones are fine to medium textured, well-sorted, grain supported, with variations of wackestone – packstone. The compressive strength of andesite is 39.98 – 49.36 MPa, calcarenite is 43.32 MPa, reef limestone is 20.44 MPa, and tuff is 11.15 MPa. The compressive strength of rock is influenced by texture (grain size/crystal) with a correlation coefficient of 68% (strong correlation). In comparison, rock composition (percentage of quartz) has a very weak correlation (correlation coefficient of 18%).

Keywords: correlation, physical properties, compressive strength, andesite, limestone.

## INTRODUCTION

The Kulon Progo hills are composed of various kinds of rocks, both sedimentary and igneous rocks. These rocks can be grouped into the Nanggulan, Old Andesite, Jonggrangan, Sentolo Formations, Alluvial Deposits, and intrusion rocks (Van Bemmelen, 1949; Rahardjo et al, 1977).

The Old Andesite Formation and Jonggrangan Formation are composed of very different rocks, whereas relatively hard and coarse volcanic rocks dominate the Old Andesite Formation. In contrast, the Jonggrangan Formation is mainly composed of layers of carbonate/carbonate sedimentary rock, relatively fine and soft-grained. With these contrasting petrophysical differences, of course, the engineering properties of rocks will also be different.

Brotodiharjo (1979) stated that mineral hardness would determine the compressive strength of rocks. The hardness of this mineral depends on its mineral composition. Therefore, the compressive strength will be determined by the rock type. In addition, some physical properties of rocks that can affect the value of compressive strength are rock texture, porosity, the presence of fractures/cracks, and weathering conditions of rock.

Physical properties of rocks affect the hydraulic characteristics (Listyani, 2020); besides, physical properties also affect the engineering properties of rocks (Brotodiharjo, 1979). Thus, rock physical properties are important in determining rock characteristics related to hydrogeological and engineering geology aspects.

This study specifically examines the differences in physical properties and compressive strength of these two formations, which is very interesting to see how much the physical properties of rocks determine the value of compressive strength. The correlation between physical properties that appear in petrological/petrographic characteristics is discussed to determine the relationship between physical and mechanical properties of rocks.

## MATERIALS AND METHODS

### Geological Settings

The research area is included in the Dome in the Central Depression Zone, according to Van Bemmelen (1949), especially in the Samigaluh District (Figure 1). The study area is composed of rocks from the Old Andesite and Jonggrangan Formation.

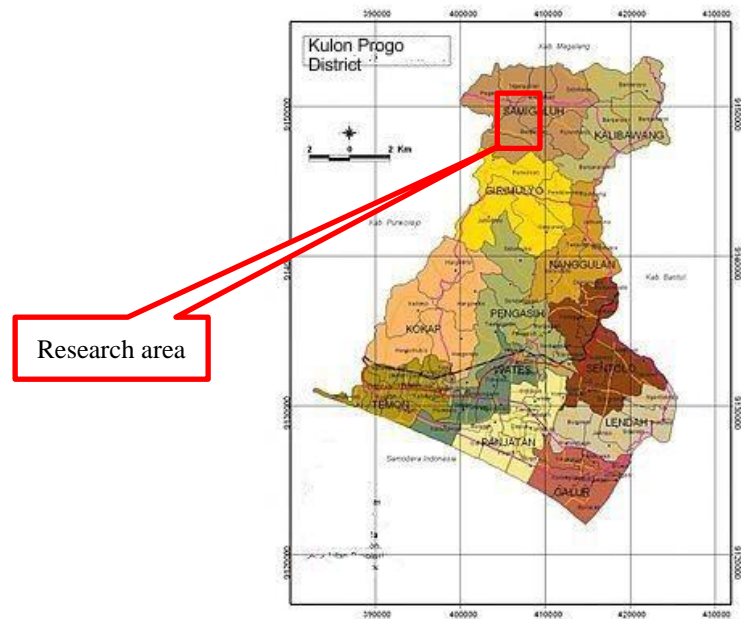


Figure 1. The research area is located in the Samigaluh area, Kulon Progo District, Java, Indonesia.

The Old Andesite Formation is composed of rocks deposited in a volcanic environment, composed of breccia, lava, lapilli, tuff, and sandstone. The dominant constituent lithology consists of andesite breccia with a tuff or tuffaceous sandstone matrix, and fragments consist of pyroxene andesite to hornblende andesite. The Old Andesite Formation results from ancient volcanic activity, namely Mount Gadjah, Ijo, and Menoreh. Meanwhile, the Jonggrangan Formation is composed of tuffaceous marl, calcareous sandstone with lignite insertions that move upwards into layered limestones and coral limestones that form reefs (Rahardjo et al., 1977).

### Field Sampling

Six rock samples were selected to represent intrusive andesite rock; OAF andesite lava, breccia fragments and tuff; and Jonggrangan limestones. The location of the side points can be seen in Table 1 and Figure 2. The description of the physical properties of rocks is carried out through direct observations in the field, including color, texture, structure, and composition.

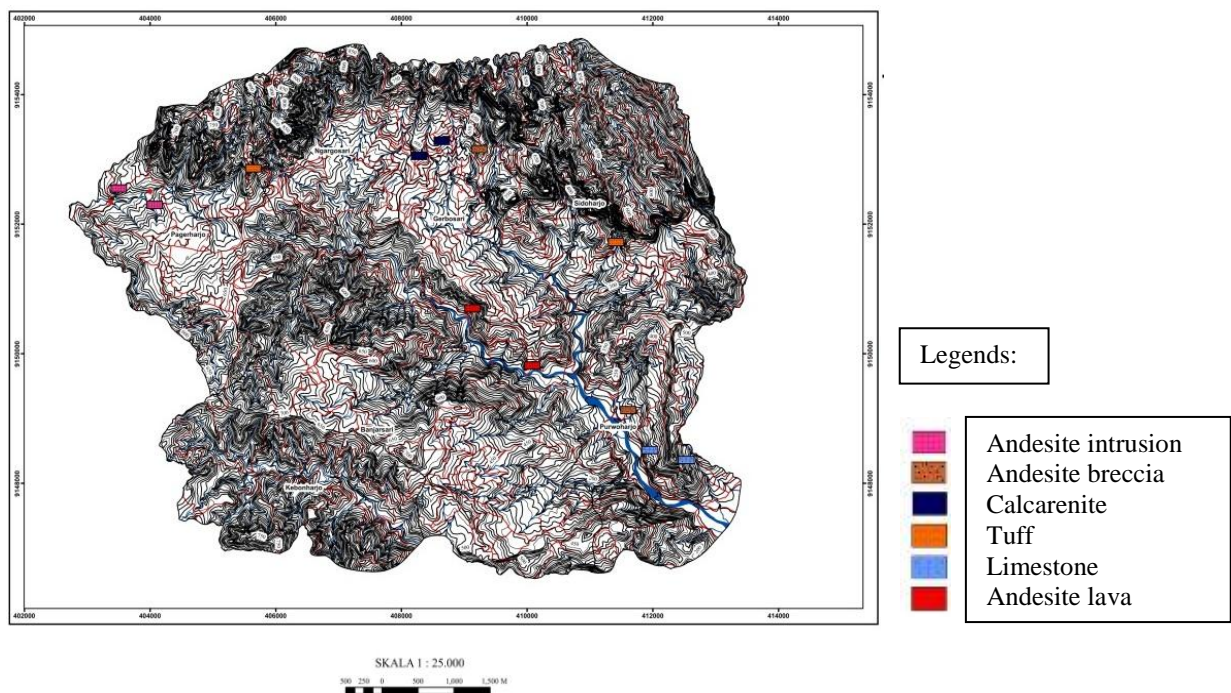


Figure 2. Map of the sampling location.

Table 1. Rock sampling locations.

No	VILLAGE	Coordinate (°)		Code Sample	Rock
		Easting	Northing		
1	Pagerharjo	-7.667568	110.123774	LDA	Andesite intrusion
2	Gerbosari	-7.659616	110.169162	LDG	Jonggrangan calcarenite
3	Sidoharjo	-7.661274	110.176048	LDD	Fragment of OAF andesite breccia
4	Sidoharjo	-7.674923	110.195895	LDC	OAF tuff
5	Purwoharjo	-7.703489	110.187473	LDF	Jonggrangan reef limestone
6	Purwoharjo	-7.692100	110.187473	LDB	OAF Andesite lava

### Laboratory Analysis

Rock samples are analyzed to determine physical properties, including a description of the physical properties of rocks and their engineering properties (compressive strength). The description of rock physical properties was carried out megascopically against hand specimens and microscopically.

a. petrographic analysis

Determination of the physical properties of rocks is carried out by petrography, using a polarizing microscope at the Geological Laboratory of the Yogyakarta National Institute of Technology,

b. Rock compressive strength test

The compressive strength test was carried out in the laboratory at the Rock Mechanics Testing Laboratory of PT. Geomine Bara Studio, Yogyakarta. The compressive strength test uses the uniaxial compressive strength (UCS) method based on SNI ISO/IEC 17025:2008 to evaluate rock conditions.

This test is carried out based on a standard that requires sample dimensions under the testing standard, namely, the length of the sample is at least twice the diameter of the sample. It also refers to several researchers such as Karaman et al (2015), Kabilan et al (2016), and Yurdakul et al (2011), who used sample dimensions with a length of more than twice the diameter.

### RESULTS

Brotodiharjo (1979) mentions internal factors (physical properties of rock) that affect its compressive strength, including the texture and mineral composition of rocks. Mineral composition greatly influences the resistance indicated by the compressive strength of rocks. Rock texture (grain size) can affect the compressive strength of rocks.

Minerals with a high level of hardness will have high resistance. Sedimentary rocks that contain a lot of quartz minerals as cement will have a higher compressive strength value than sedimentary rocks that do not have a cement composition of quartz minerals. The greater the quartz mineral content, the higher the compressive strength value, while the weakest sedimentary rock is a sedimentary rock with clay mineral composition. Therefore, the study of mineral composition was carried out on the percentage of quartz minerals.

The sample rocks included igneous rocks (andesite breccia intrusions and fragments), sedimentary rocks (limestone), and pyroclastic rocks (tuff). The physical properties of these rocks are different and can be observed in the field, both in fresh and weathered conditions. Megascopically, andesite found in general has a porphyroaphanitic, subhedral, hypocrySTALLINE, inequigrANULAR texture, with a composition of plagioclase, quartz, hornblende, and opaque minerals. The tuff is light, soft, with a fine texture, subhedral, hypocrySTALLINE, and equigrANULAR, and composed of glass and plagioclase. Meanwhile, limestones are generally fine-medium textured, subrounded-rounded grain shape, well sorted and packed tightly, with carbonate and fossil mineral compositions. All rocks are found in fresh until highly weathered conditions, even soil.

Some examples of the appearance of these rock outcrops can be seen in Figure 3. The petrographic description of these rocks can be seen in Table 2. Furthermore, the compressive strength test results can be seen in Table 3. Moreover, the results of petrography and compressive strength tests were analyzed to see the relationship between physical and mechanical rock properties. The results of the analysis are presented in Figures 4-5.

The physical properties of rocks can mainly be determined by their texture and composition. The textures that can be studied include grain size, shape, and the relationship between grains. However, not all samples showed apparent differences in the texture variables. The grain/crystal shape of the rocks studied generally shows anhedral-subhedral shape, so its correlation with compressive strength is difficult to learn. The relationship between grains is also difficult to check because all igneous rock samples show porphyroaphanitic characteristics, inequigrANULAR; and limestone samples generally show a grain-supported texture. Therefore, the only texture variable that can be studied is the aspect of grain or crystal size. Meanwhile, a study of rock composition was carried out on the number of quartz minerals,





Figure 3. Rock outcrops found in the field: andesite intrusion at Pagerharjo (left); andesite breccia in Sidoharjo (middle); and reef limestones in Purwoharjo (right).

Table 2. Petrographic description of the rocks studied.

Sample Code	Texture			Composition	Name of Rock	
	Grain size (mm)	Shape	Relation			
			Sortation/ Crystallization			Fabric
LDA	0.2-0.6	Subhedral-anhedral	Porphyroaphanitic, hipocrystalline	Inequigranular	Plagioclase 83%, quartz 7%, hornblende 6%, opaque mineral 4%	Andesite
LDG	0.2-0.6	Rounded-subrounded	Grain supported		Intraclass (20%), ooids (10%), carbonate mud (15%), and skeletal grains (55%)	Packstone
LDD	0.1-0.3	Subhedral-anhedral	Phaneroaphanitic, hipocrystalline	Inequigranular	Plagioclase (albite) 72%, quartz 5%, hornblende 15%, and opaque mineral 8%	Hornblende andesite
LDC	0.1-0.2	Subhedral-anhedral	Hypocrystalline		Plagioclase (albite) 45%, alkali feldspar 25%, quartz 5%, glass 15%, biotite 8%, opaque mineral 7%	Crytal tuff
LDF	0.02-0.05	Rounded-subrounded	Grain supported		Pellet (24%), carbonate mud (30%), skeletal grains (46%)	Packstone
LDB	0.1-0.4	Subhedral-anhedral	Porphyroaphanitic, hipocrystalline	Inequigranular	Plagioclase (andesine) 93%, quartz 5%, opaque mineral 2%	Andesite

Table 3. The results of the compressive strength of the rock under study.

Location	Sample Code	Rock	UCS Compressive Strength (MPa)
1	LDA	Andesite intrusion	39.98
2	LDG	Calcarenite	43.32
3	LDD	Fragment of andesite breccia	45.08
4	LDC	Tuff	11.15
5	LDF	Reef limestone	20.44
6	LDB	Andesite lava	49.36

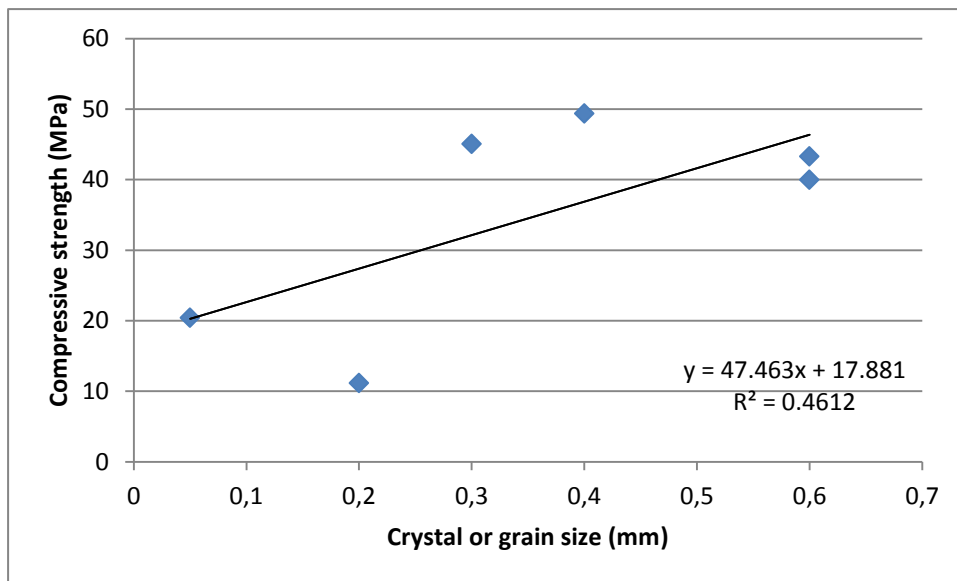


Figure 4. Relation of grain (crystal) size of rock to its compressive strength value.

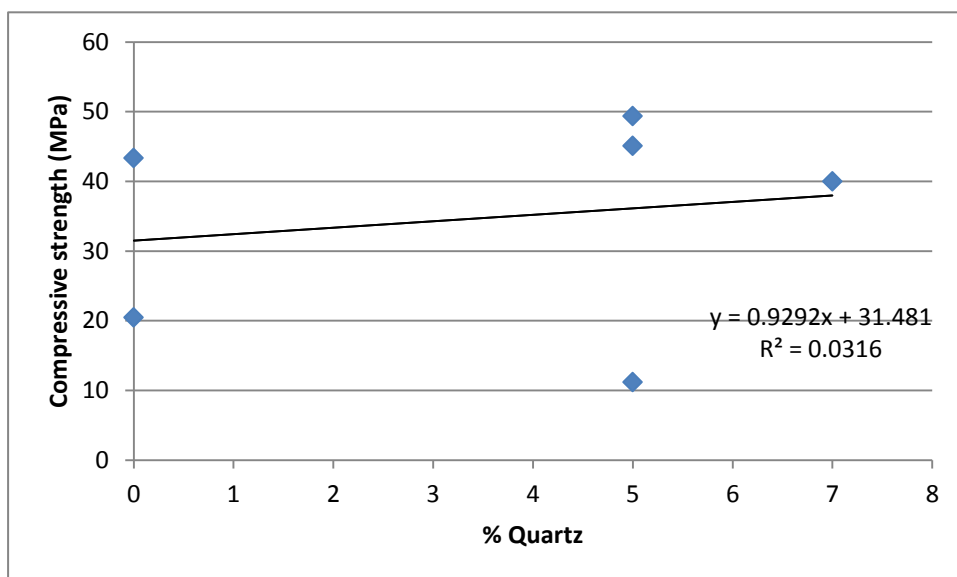


Figure 5. The relationship of the percentage of quartz in the rock to the value of its compressive strength.

The regression test results of the grain size and rock compressive strength variables showed a good relationship, with the  $R^2$  value of 0.46, which means it has a correlation coefficient of 68%. This value indicates a strong correlation between the two variables (Sugiyono, 1997; Figure 4).

Meanwhile, the regression results of the relationship between the percentage of quartz and the compressive strength of rocks show a weak correlation. The  $R^2$  value for this relationship is only 0.0316, or the correlation coefficient is 18%. This value is a value for a very low level of relationship (Sugiyono, 1997; Figure 5). This shows that the amount of quartz content is not a determinant of the size of the rock's compressive strength.

The regression test results, as presented in Figure 4-5, shows that grain/crystal size plays a more important role in determining the compressive strength of the rock under study. The larger the grain size/crystal, the rock will have a higher compressive strength.

Meanwhile, the results of the correlation of compositions based on the percentage of quartz to the compressive strength of rocks give very low results, indicating that the presence of quartz does not affect the

compressive strength of rocks. The calcarenite limestone in LP 2 (LDG sample) shows a high compressive strength value (43.32 MPa). Petrographically, this rock is called packstone, dominated by composition in the form of skeletal grains.

The intact rock sample of the calcarenite limestone shows high compressive strength, one of which is supported by reasonably large grain size. In addition, the process of compaction and lithification certainly greatly affects the physical properties of the rock to increase the hardness of the rock in the study area. Tuff has the lowest compressive strength value; this is supported by conditions in the field which show tuff which is fine-grained, light, and relatively soft.

## CONCLUSION

Igneous rocks analyzed in this study are andesite igneous rocks, both in intrusion and OAF lava. The texture of this igneous rock is generally porphyroaphanitic, anhedral - subhedral crystal form, hypocrySTALLINE, inequigranular, with a massive structure, with a dominant composition of plagioclase and accessory minerals in the form of hornblende. The OAF tuff shows a smooth, hypocrySTALLINE, with variations in glass tuff and crystalline tuff. Meanwhile, Jonggrangan limestone shows a fine – medium texture, well-sorted, packed closed, and varies as wackestone – packstone.

The compressive strength values of rock samples in intrusive rocks and the two formations tested varied widely. Andesite rock has a high compressive strength value (39.98 – 49.36 MPa) and calcarenite (43.32 MPa). Reef limestone has a lower compressive strength, which is 20.44 MPa, while the lowest compressive strength value is shown by a tuff of 11.15 MPa.

The correlation between physical and rock engineering properties in the tested samples is influenced by texture (grain size/crystal) with a correlation coefficient of 68% (strong correlation). Meanwhile, the rock composition represented by the percentage of quartz shows a very weak relationship with a correlation coefficient of 18%.

## Acknowledgment

The author would like to thank the Yogyakarta National Institute of Technology for providing financial assistance for internal research in 2021 so that this paper can be written. The author would also like to thank the field assistants, namely Rajawali, Abdul, Ega, and Veggy, and all those who have assisted in the preparation of this manuscript.

## References

- National Standardization Agency, 2008, Test Method for Uniaxial Rock Compressive Strength, SNI 2825: 2008, Ministry of Public Works: Standard Management Information System: Building Construction Materials and Civil Engineering, Jakarta.
- Brotodiharjo, APP, 1979, Importance of Compressive Strength Tests on Rock/Soil in Geotechnical Investigations, Department of Public Works, Jakarta.
- Kabilan, N., Muttharam, M., Siva, A. and Philips, N., 2016, Prediction of Uniaxial Compressive Strength Using Point Load Index for Jointed Rock, IOSR Journal of Mechanical and Civil Engineering, Vol. 13, No. 3, pp. 1–7.
- Karaman, K., Cihangir, F., Ercikdi, B., Kesimal, A. and Demirel, S., 2015, Utilization of the Brazilian Test for Estimating the Uniaxial Compressive Strength and Shear strength parameter, Journal of the Southern African Institute of Mining and Metallurgy, Vol. 115, No. 3, pp. 185–192.
- Listyani RA, T., 2020, Identification of Petrophysical Rocks as Supporting Hydraulic Characteristics of Aquifers in the Code Sub-watershed, Yogyakarta, Geosapta Journal, Vol. 6, No. 2, pp. 103-109, July 2020, Mining Engineering, Lambung Mangkurat University.
- Sugiyono, 1997, Administrative Research Methods, CV. Alfabeta, Yogyakarta.
- Van Bemmelen, RW, 1949, The Geology of Indonesia, Vol.1A, Martinus Nijhoff, The Hague, Netherland.
- Wikipedia, 2021, Kulon Progo Regency, <https://id.wikipedia.org>, downloaded on March 11, 2021.



Yurdakul, M., Ceylan, H. and Akdas, H., 2011, A Predictive Model for Uniaxial Compressive Strength of Carbonate Rocks from Schmidt Hardness, Proc. of 45<sup>th</sup> US Rock Mechanics/Geomechanics Symposium, American Rock Mechanics Association, San Francisco, CA.



Title of paper

THE INFLUENCE OF PHYSICAL PROPERTIES ON THE COMPRESSIVE STRENGTH OF THE ROCK IN THE SAMBALUH AREA, KULON PROBO, INDONESIA

Name of Author(s): T. Listyani R.A & Dianto Isnawan

Paper id: ASER00144

The undersigned hereby transfer any and all rights in and to the paper including without limitation all copyrights to the "International Journal of Applied Science and Engineering Review". The undersigned hereby represents and warrants that the paper is original and that he/she is the author of the paper, except for material that is clearly identified as to its original source, with permission notices from the copyright owners where required. The undersigned represents that he/she has the power and authority to make and execute this assignment.

This agreement is to be signed by at least one of the authors who have obtained the assent of the co-author(s) where applicable.

Author's Signature & Date [Corresponding Author (in case many authors)]

Typed or Printed Name

T. Listyani R.A.

Institution or Company

ITNY - Indonesia

Send scan copy after sign on it to [editor@ijaser.org](mailto:editor@ijaser.org)

Editor in Chief



listyani theo <listyanitheophila@gmail.com>

---

**Acceptance Letter | Paper Id ASER00144 (THE INFLUENCE OF PHYSICAL PROPERTIES.....)**

---

**IJASER** <submit@ijaser.org>

9 Maret 2022 19.33

Kepada: listyani theo <listyanitheophila@gmail.com>

Dear author,

Thank you for sending copyright and payment confirmation. Your paper will be published soon in current issue. We will inform you after successful publication.

With Regards  
Editor-in-Chief  
IJESSR