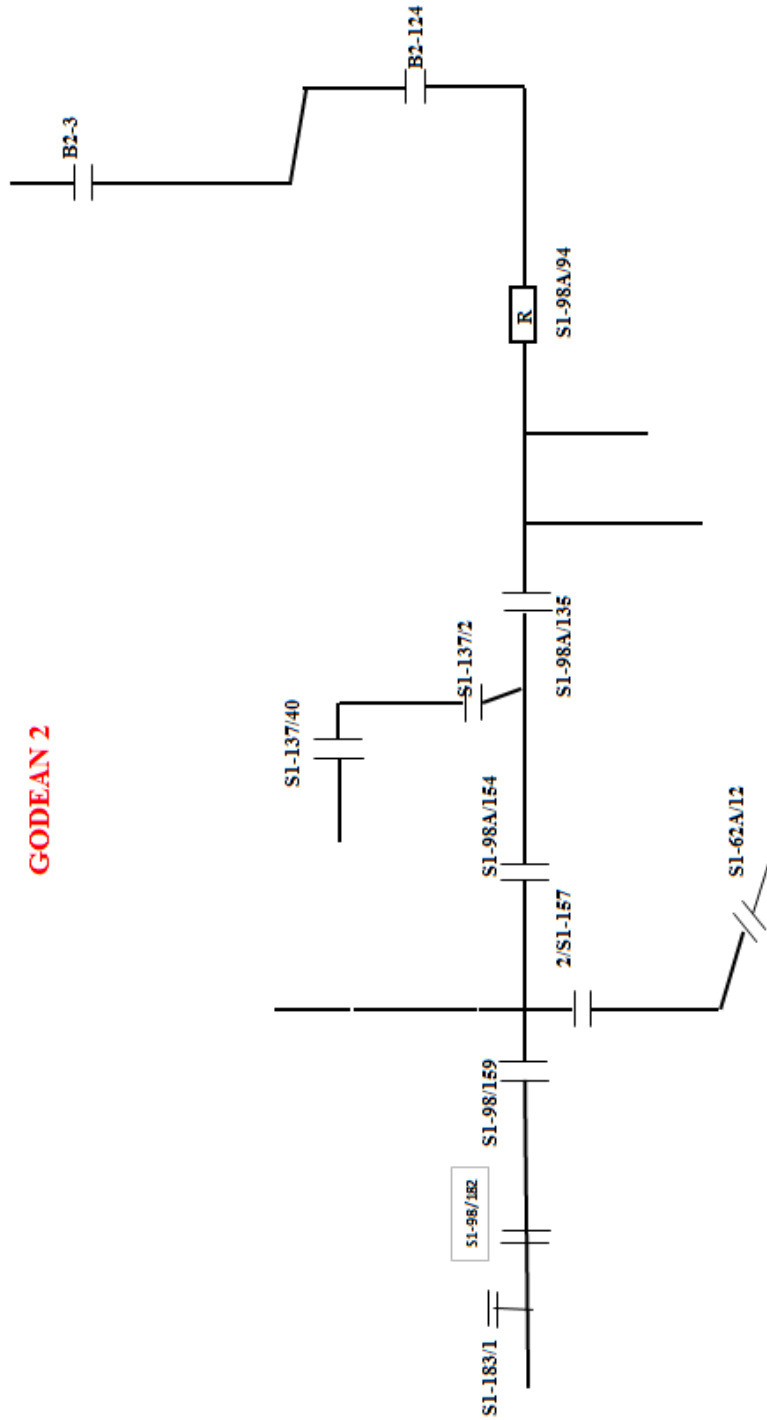


**Lampiran - Lampiran**

# Singleline Penyulang GD 2



**GODEAN 2**

### Data Beban Penyulang

SECTION 1	ABSW	B2-3	S/D	ABSW	B2-124
TAPING	NO.Tiang	Dusun		<b>KVA TRF</b>	
TAP 1				<b>85</b>	<b>KVA</b>
TAP 2					
SECTION II	ABSW	B2-124	S/D	REC.	S1-98A/94
TAPING	NO.Tiang	Dusun	Dan	ABSW	S1-98A/67A
TAP 1	S1-98A/71	Bodeh			
TAP 2	S1-98A/81	Depok			
TAP 3	S1-98A/85	Gejawan			
TAP 4	S1-85/25A	Gejawan			
TAP 5	S1-25F/9	Temuwuh			
TAP 6	S1-98A/88	Pasekan			
				<b>KVA TRF</b>	
				<b>2895 KVA</b>	
SECTION III	ABSW	S1-98A/94	S/D	ABSW	S1-98A/135
TAPING	NO.Tiang	Dusun			
TAP 1	S1-98A/106	Jetis dawé			
TAP 2	S1-98A/113	Pereng dawé			
TAP 3	S1-113/13	Sumber Gamol			
TAP 4	S1-114/2	Pereng dawé			
TAP 5	S1-114/5A	Pr Salsabela			
TAP 6	S1-12/1	PR.Jatisawit			
TAPING	NO.Tiang	Dusun			
TAP 7	S1-114/20	Jatisawit			
TAP 8	S1-114/46A	Sambung			
TAP 9	S1-114/50	Sambung			
TAP 10	S1-98A/117	Pereng dawé			
TAP 11	S1-128/4A	Surobayan			
TAP 12	S1-128/9	Kaliurang			
TAP 13	S1-128/16	Kaliurang			
TAP 14	S1-128/22	Metes Barat			
TAP 15	S1-128/22	Metes Timur			
TAP 16	S1-22/17A	Metes			
TAP 17	S1-98A/134	Karang lo			
TAP 18	S1-98A/129	Dn Plawonan			
				<b>KVA TRF</b>	
				<b>3000 KVA</b>	
SECTION IV	ABSW	S1-98A/135	S/D	ABSW	S1-98A/154
TAPING	NO.Tiang	Dusun			
TAP 1	S1-140/3	Bandut Lor			
TAP 2	S1-141/1	PR.Griyakencana			
TAP 3	S1-98A/146	Pedusan			
TAP 4	S1-146/20	Ngentak			
TAP 5	S1-98A/137A	Pedes			
				<b>KVA TRF</b>	
				<b>1265</b>	<b>KVA</b>
SECTION V	ABSW	S1-137/2	S/D	ABSW	S1-137/40A
TAPING	NO.Tiang	Dusun			

TAP 1	S1-137/31	Kemusuk	<table border="1"> <tr> <th colspan="2">KVA TRF</th> </tr> <tr> <td>2075</td> <td>KVA</td> </tr> </table>			KVA TRF		2075	KVA
KVA TRF									
2075	KVA								
TAP 2	S1-137/34	Kemusuk							
TAP 3	S1-137/44	Kemusuk							
TAP 4	S1-20/9	Modinan							
SECTION VI	ABSW	S1-98A/154	S/D	ABSW	S1-98A/159				
TAPING	NO.Tiang	Dusun	<table border="1"> <tr> <th colspan="2">KVA TRF</th> </tr> <tr> <td>535</td> <td>KVA</td> </tr> </table>			KVA TRF		535	KVA
KVA TRF									
535	KVA								
TAP 1	S1-98A/157H	Purwomarto							
TAP 2	S1-98A/157J	Gayam							
TAP 3	S1-157Q/1	Gubug							
TAP 4	S1-98A/157T	Gubug							
SECTION VII	ABSW	S1-157/2	S/D	ABSW	S1-63A/12				
TAPING	NO.Tiang	Dusun	<table border="1"> <tr> <th colspan="2">KVA TRF</th> </tr> <tr> <td>1005</td> <td>KVA</td> </tr> </table>			KVA TRF		1005	KVA
KVA TRF									
1005	KVA								
TAP 1	S1-157/10	Semampir							
TAP 2	S1-157/16	Sundi Kidul							
TAP 3	S1-157/23	Senowo							
TAP 4	S1-157/39	Bentangan							
TAP 5	S1-157/41	Sumberan							
TAP 6	S1-157/48	Selogedong							
TAP 7	S1-48/13	Kadibeso							
TAP 8	S1-13/1	Kadibeso							
TAP 9	S1-157/55	Jlenggutan							
TAP 10	S1-157/56	Jlenggutan kulon							
TAPING	NO.Tiang	Dusun							
TAP 11	S1-157/57	Jlenggutan wetan							
TAP 12	S1-157/64	Sungapan							
TAP 14	S1-68/16	Demangan							
TAP 15	S1-16M/31	Cawan							
SECTION VIII	ABSW	S1-98A/159	S/D	ABSW	S1-183/43				
TAPING	NO.Tiang	Dusun	Dan	ABSW	S1-98A/196				
TAP 1	S1-98A/167	Kalakan	<table border="1"> <tr> <th colspan="2">KVA TRF</th> </tr> <tr> <td>945</td> <td>KVA</td> </tr> </table>			KVA TRF		945	KVA
KVA TRF									
945	KVA								
TAP 2	S1-5/1	Jambon							
TAP 3	S1-178/9	Jambon keselatan							
TAP 8	S1-178/9	Jambon ketimur							
TAP 4	S1-98A/187	Kalijoho							
TAP 5	S1-98A/189	Klangon							
TAP 6	U2-230/141K	Botokan							
TAP 7	U2-117/18	Gamplong							

<b>NO</b>	<b>NAMA</b>	<b>UNIT UP</b>	<b>TARIF</b>	<b>DAYA(VA)</b>
1	UNIV.MERCU BUANA	52100	S2	16500
2	PLN RAYON SEDAYU	52100	B2	41500
3	PT IGA MURNI SEJAHTERA	52100	I2	53000
4	PDAM PERENG KEMBANG	52100	B2	53000
5	PT PUROSANI PRIMA	52100	B2	66000
6	UNIVERSITAS WANGSAMANGGALA	52100	S2	66000
7	PENYEDIAAN AIR BERSIH(PDAM)	52100	I2	66000
8	AMANDA BROWNIES	52100	B2	82500
9	WATERPARK CGMY	52100	B2	105000
10	KANTOR METEOROLOGI DAN GEOFISIKA	52100	P1	105000
11	INST PERT WANGSA M	52100	S2	105000
12	R NOTO SUWITO	52100	I2	105000
13	PT.CITRA RAHARJA UTAMA	52100	I2	197000
14	PT.LENTERA PANEN MANDIRI	52100	I2	197000
15	PT.MARVEL SPORT INTERNASIONAL	52100	B3	345000
16	PERTAMINA UNIT 4	52100	B3	555000
17	PT.ANGGUN KREASI GARMENT	52100	I2	555000
18	TERMINAL BBM REWULU	52100	B3	865000
19	PT. ADP	52100	I3	865000
20	PT. KUSUMA SANDANG MJ	52100	I3	1110000
21	PT.KSM	52100	I3	2180000
22	SATKER PAMS DIY	52100	B3	1110000
23	PT DAGSAP ENDURA EATORE	52100	I3	1730000

NO	Panjang		Panjang (km)	Jenis Penghantar	Resistansi dan Reaktansi (ohm/km)	Beban (Ampere 3 fase)	Arus Mengalir (Ampere 3 fase)
	Dari	s/d					
1	Bus 1	Bus 2	6,28	A3C 240 mm	0,1344 + j 0,3158	2,3	509,6
2	Bus 2	Bus 3	2,05	A3C 240 mm	0,1344 + j 0,3158	6,3	507,35
3	Bus 3	Bus 4	0,25	A3C 240 mm	0,1344 + j 0,3158	2,2	411,45
		Bus 3.1	0,8	A3C 70 mm	0,4608 + j 0,3572	89,6	89,6
4	Bus 4	Bus 5	1,28	A3C 240 mm	0,1344 + j 0,3158	5,1	409,25
5	Bus 5	Bus 6	1,1	A3C 240 mm	0,1344 + j 0,3158	0	398.75
		Bus 5.1	0,9	A3C 70 mm	0,4608 + j 0,3572	5,4	5,4
6	Bus 6	Bus 7	0,55	A3C 240 mm	0,1344 + j 0,3158	77,7	398.75
		Bus 6.1	1,55	A3C 70 mm	0,4608 + j 0,3572	0	0
7	Bus 7	Bus 8	0,1	A3C 240 mm	0,1344 + j 0,3158	24,9	321,05
8	Bus 8	Bus 8.1.1	3,1	A3C 240 mm	0,1344 + j 0,3158	48,85	102,35
		Bus 8.1.2	0,1	A3C 240 mm	0,1344 + j 0,3158	53,5	53,5
		Bus 9	2	A3C 240 mm	0,1344 + j 0,3158	32,6	193,8
9	Bus 9	Bus 10	0,2	A3C 240 mm	0,1344 + j 0,3158	0	161,12
10	Bus 10	Bus 10.1	1	A3C 240 mm	0,1344 + j 0,3158	0	0
		Bus 10.2	5,4	A3C 240 mm	0,1344 + j 0,3158	48,8	48,8
11	Bus 10	Bus 11	0,2	A3C 240 mm	0,1344 + j 0,3158	13,8	112,4
12	Bus 11	Bus 12	4	A3C 240 mm	0,1344 + j 0,3158	44,3	98,6
13	Bus 12	Bus 13	1,1	A3C 240 mm	0,1344 + j 0,3158	54,3	54,3

